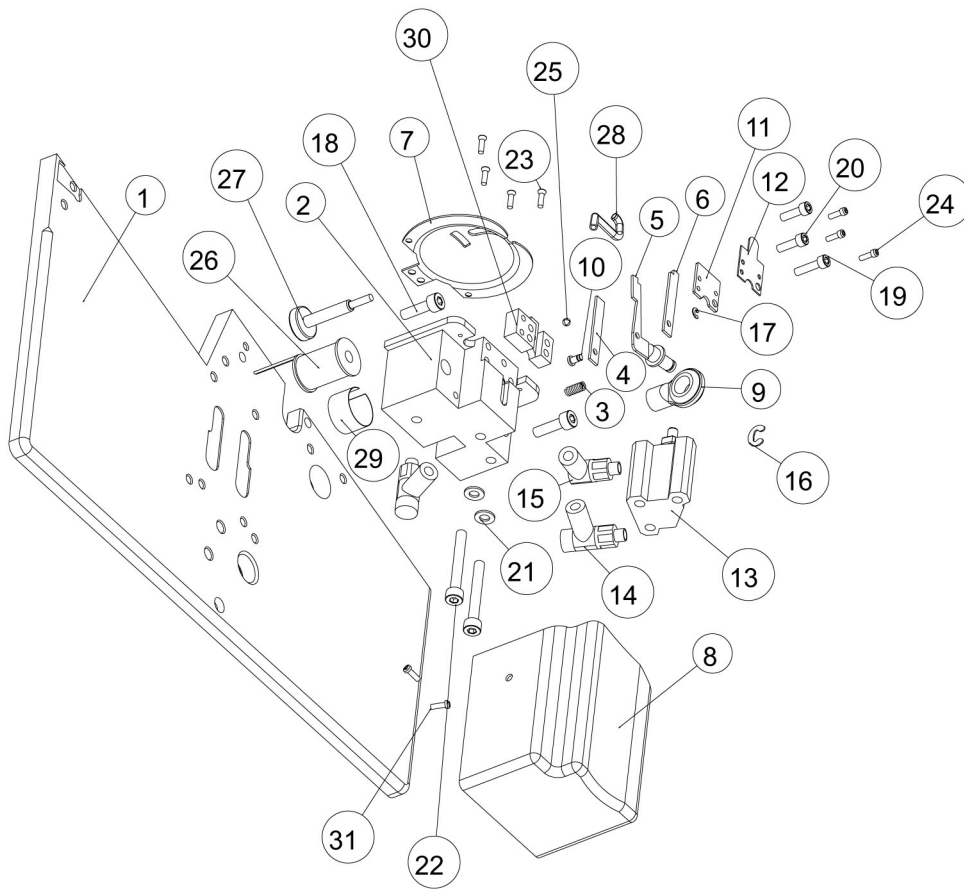
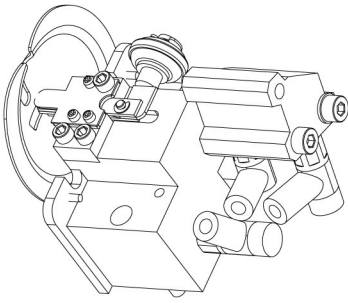


TABLE OF CONTENTS

Trimming System.....	3-2
Wrapping Assembly.....	3-4
Knotting Mechanism.....	3-6
Knotting Drive.....	3-8
Thread Take Up Assembly.....	3-10
Thread Tension Assembly.....	3-12
Thread Stand.....	3-14
Cabinet Housing Accessories.....	3-16
Pneumatic Accessories.....	3-18
Electrical and Electronics.....	3-20

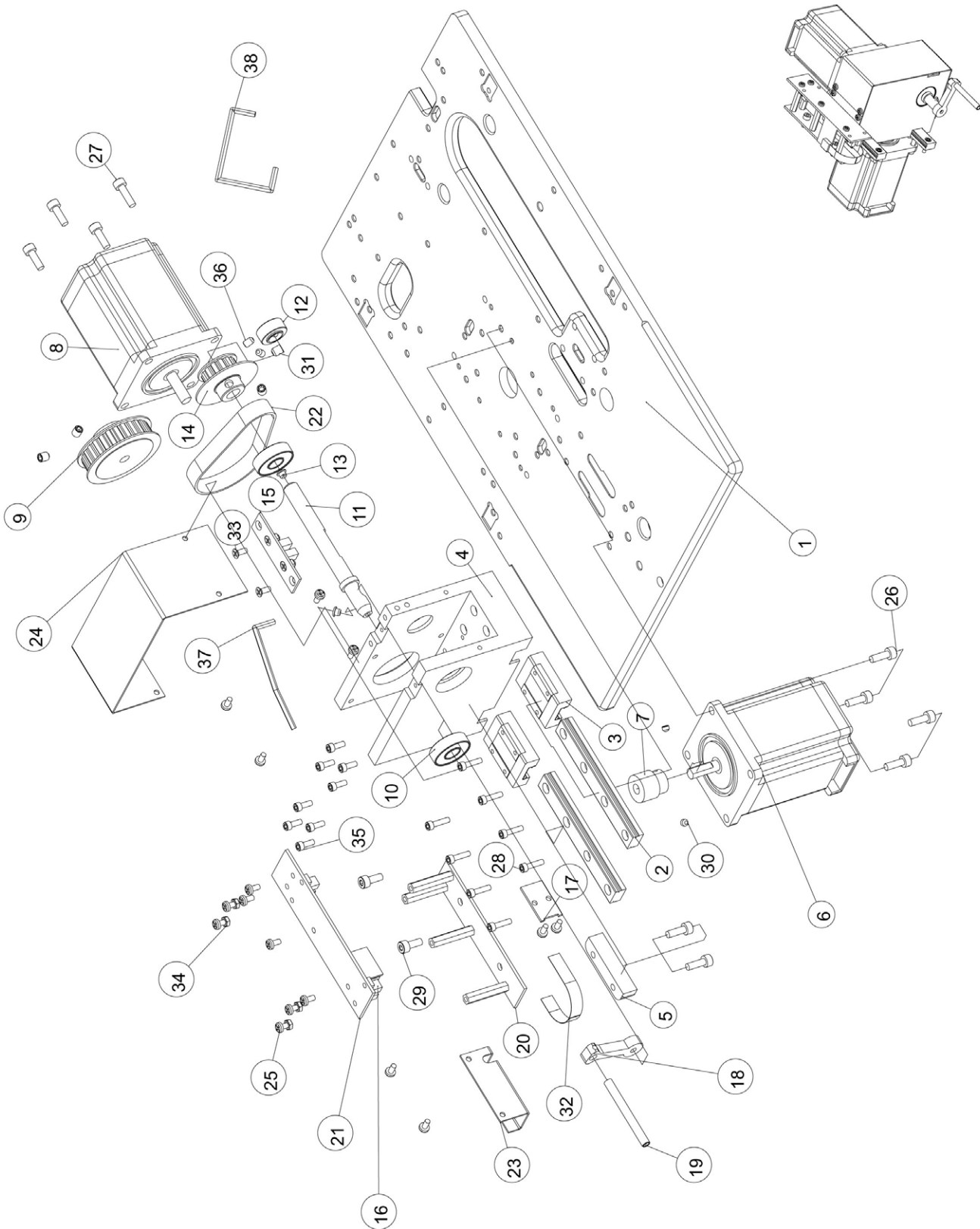
TRIMMING SYSTEM



TRIMMING SYSTEM

ITEM NO.	PART NUMBER	DESCRIPTION	QTY.
1	STBP-1800	BASE PLATE	1
2	TRM-001	TRIMMING BLOCK	1
3	TRM-002	SPRING	1
4	TRM-003	THREAD HOLDER	1
5	TRM-004	MOVING KNIFE	1
6	TRM-005	FIXED KNIFE	1
7	TRM-006	WRAPPING DISC	1
8	TRM-007	TRIMMING BLOCK COVER	1
9	TRM-008	CONNECTOR	1
10	TRM-009	HINGE PIN	1
11	TRM-010	KNIFE COVER	1
12	TRM-011	TENSION PLATE	1
13	TRM-012	CYLINDER	1
14	TRM-013	CONTROLLER	2
15	TRM-014	L- BOW	1
16	CCP-500	CIRCLIP	1
17	CCP-250	CIRCLIP	1
18	ACH-414	ALLEN SCREW	2
19	ACH-312	ALLEN SCREW	1
20	ACH-310	ALLEN SCREW	2
21	FW-400	FLAT WASHER	2
22	ACH-430	ALLEN SCREW	2
23	CSK-206	CSK SCREW	4
24	RHS-206	ROUND HEAD SCREW	3
25	TRM-015	BALL	1
26	TRM-16	E.M.COIL	1
27	TRM-017	PLUNGER	1
28	TRM-018	AIRJET	1
29	TRM-019	E.M.COIL STAND	1
30	TRM-020	KNIFE BASE	1
31	RHS-306	ROUND HEAD SCREW	2

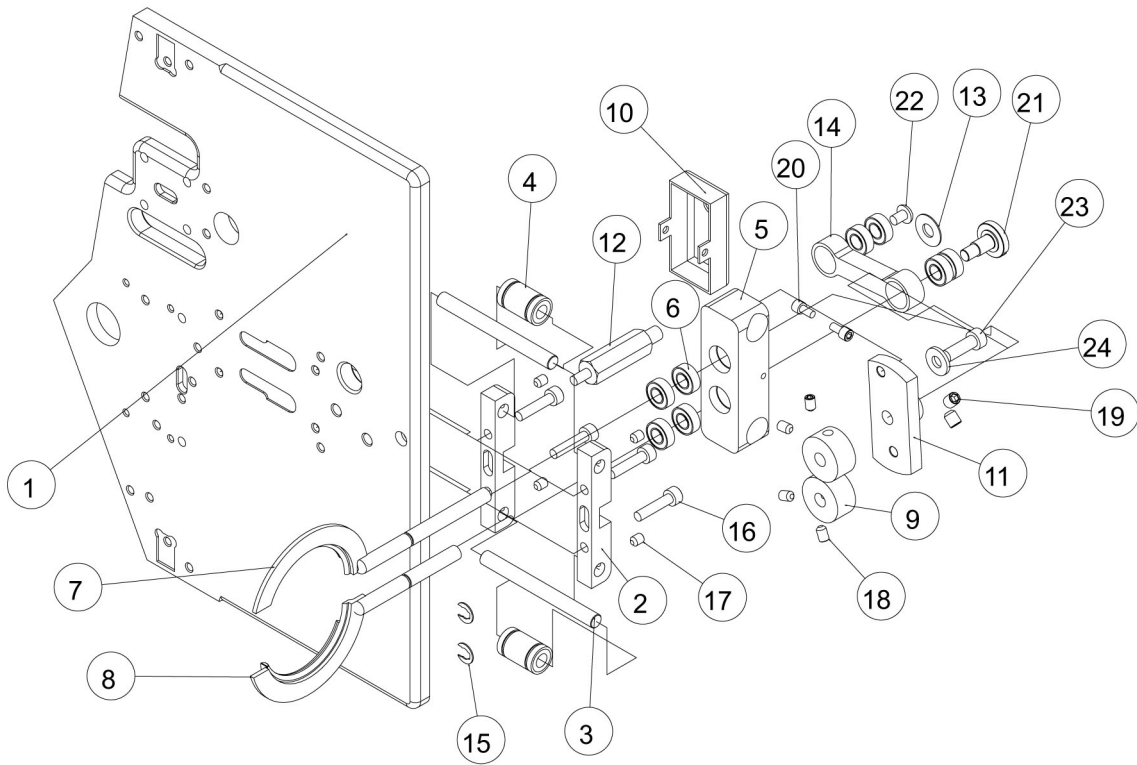
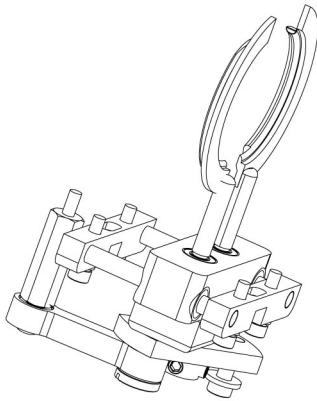
WRAPPING ASSEMBLY



WRAPPING ASSEMBLY

ITEM NO.	PART NUMBER	DESCRIPTION	QTY.
1	STBP-1800	BASE PLATE	1
2	WA-001	RAIL	2
3	WA-002	GUIDE	2
4	WA-003	WRAPPING HOUSING	1
5	WA-004	RACK GEAR	1
6	SM-200	STEPPING MOTOR	1
7	WA-005	GEAR	1
8	SM-200	STEPPING MOTOR	1
9	WA-006	PULLEY BIG	1
10	MB-2497	BEARING	2
11	WA-007	THREAD SHAFT	1
12	WA-008	COLLAR	1
13	PBD-402	BEAD	2
14	WA-009	PULLEY SMALL	1
15	WA-010	WRAPPING SENSOR BOARD	1
16	WA-011	SENSOR	3
17	WA-012	FFC PCB	1
18	WA-013	THREAD TUBE CONNECTOR	1
19	WA-014	THREAD TUBE	1
20	WA-015	OSC-PCB STNAD	1
21	WA-016	OSC SENSOR BOARD	1
22	WA-017	BELT	1
23	WA-018	OSC-SENSOR ACTUATOR	1
24	WA-019	HOUSING COVER	1
25	RHS-305	ROUND HEAD SCREW	16
26	ACH-412	ALLEN SCREW	9
27	ACH-414	ALLEN SCREW	1
28	ACH-312	ALLEN SCREW	8
29	ACH-410	ALLEN SCREW	2
30	GS-403	GRUB SCREW	2
31	GS-506	GRUB SCREW	4
32	WA-020	FLAT CABLE	1
33	CSK-306	CSK SCREW	4
34	NT-003	NUT	6
35	ACH-308	ALLEN SCREW	8
36	GS-406	GRUB SCREW	2
37	WA-021	AIR JET TOP	1
38	WA-022	AIR JET BOTTOM	1

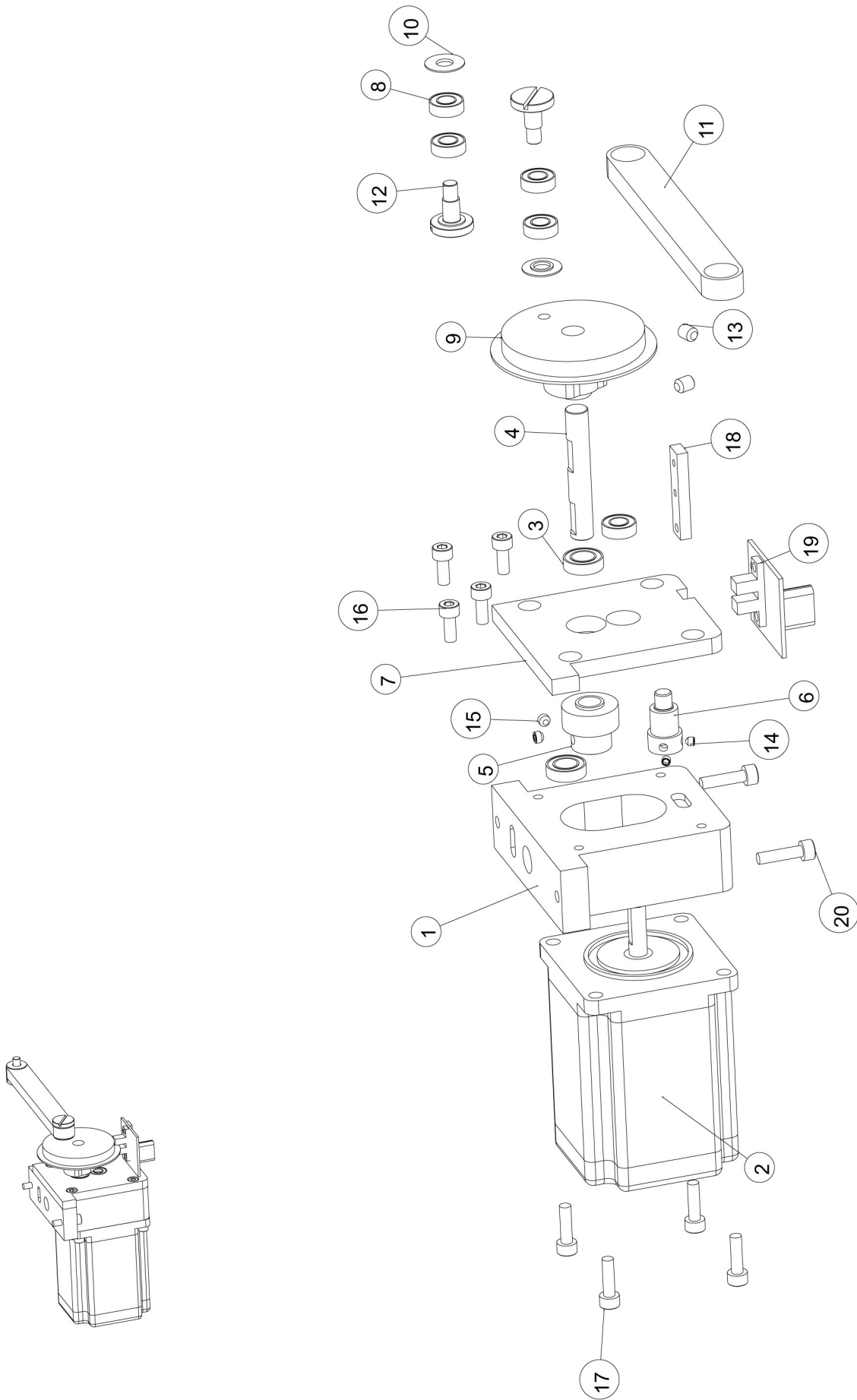
KNOTTING MECHANISM



KNOTTING MECHANISM

ITEM NO.	PART NUMBER	DESCRIPTION	QTY.
1	STBP-1800	BASE PLATE	1
2	KM-001	SLIDE BAR HOLDER	2
3	KM-002	SLIDE BAR	2
4	LB-600	LINEAR BEARING	2
5	KM-003	KNOTTING BLOCK	1
6	MB-1264	BEARING	8
7	KM-004	KNOTTING WING_RH	1
8	KM-004	KNOTTING WING_LH	1
9	KM-005	KNOTTING GEAR	2
10	KM-006	KNOTTING GEAR COVER	1
11	KM-007	OSCILATING CAM	1
12	KM-008	STOPPER STAND	1
13	BS-600	BEARING SHIM	1
14	KM-009	STOPPER	1
15	CCP-600	CIRCLIP	2
16	ACH-418	ALLEN SCREW	4
17	GS-405	GRUB SCREW	4
18	GS-406	GRUB SCREW	4
19	GS-506	GREUB SCREW	2
20	ACH-306	ALLEN SCREW	2
21	HS-6005	HINGE SCREW	1
22	RHS-400	ROUND HEAD SCREW	1
23	ACH-515	ALLEN SCREW	1
24	FW-500	FLAT WASHER	1

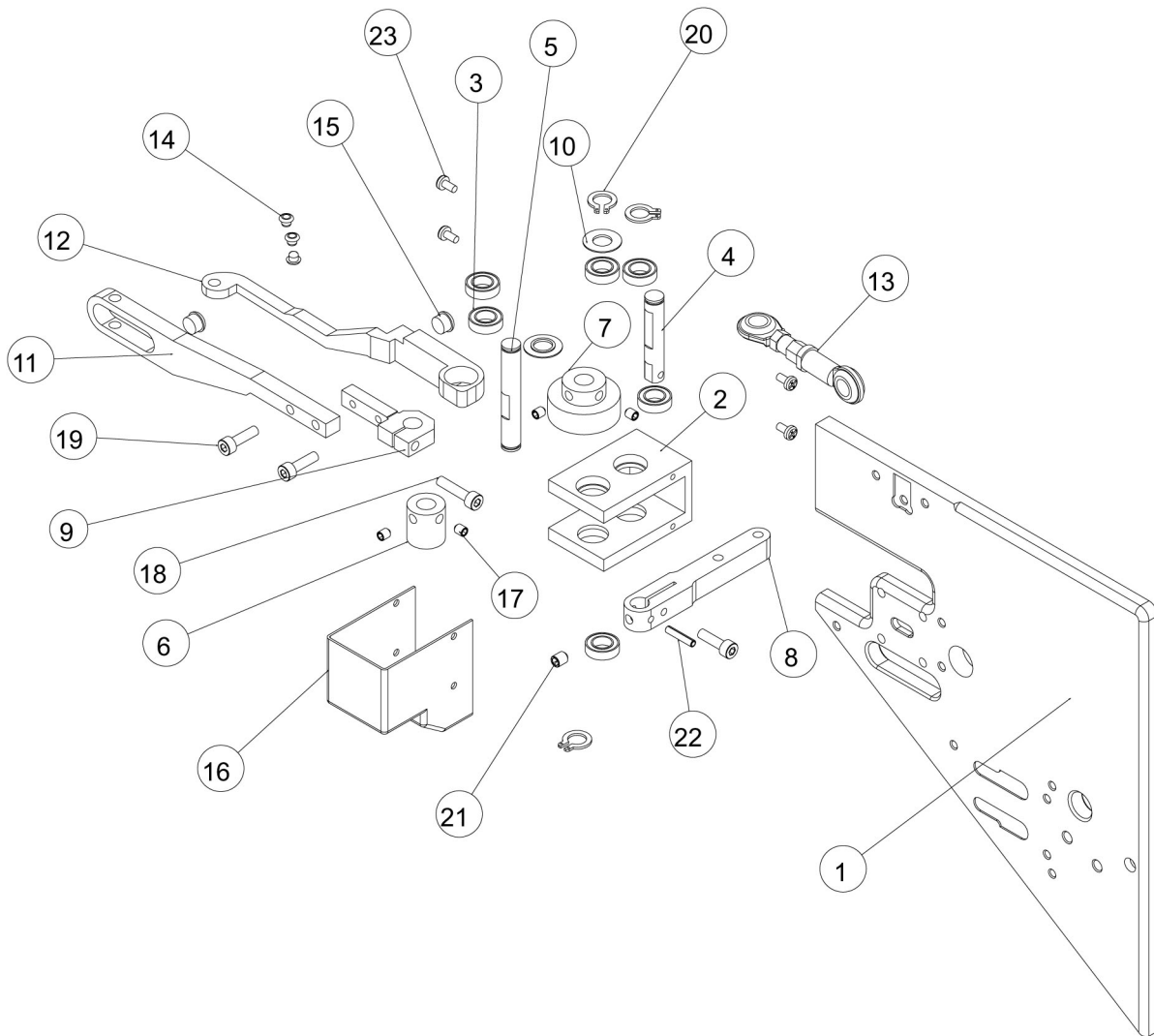
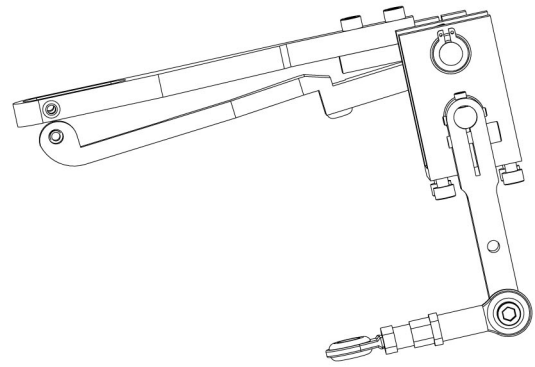
KNOTTING DRIVE



KNOTTING DRIVE

ITEM NO.	PART NUMBER	DESCRIPTION	QTY.
1	KGB-001	KNOTTING GEAR BOX BODY	1
2	SM-200	STEPPING MOTOR	1
3	MB-1484	BEARING	2
4	KGB-002	CAM SHAFT	1
5	KGB-003	GEAR	1
6	KGB-004	GEAR	1
7	KGB-005	GEAR BOX COVER	1
8	MB-1264	BEARING	5
9	KGB-006	CAM	1
10	BS-600	BEARING SHIM	2
11	KGB-007	AXLE	1
12	HS-6005	HINGE SCREW	2
13	GS-506	GRUB SCREW	2
14	GS-303	GRUB SCREW	2
15	GS-403	GRUB SCREW	2
16	ACH-410	ALLEN SCREW	4
17	ACH-414	ALLEN SCREW	4
18	KGB-008	SENSOR HOLDER	1
19	KGB-009	SENSOR	1
20	ACH-416	ALLEN SCREW	2

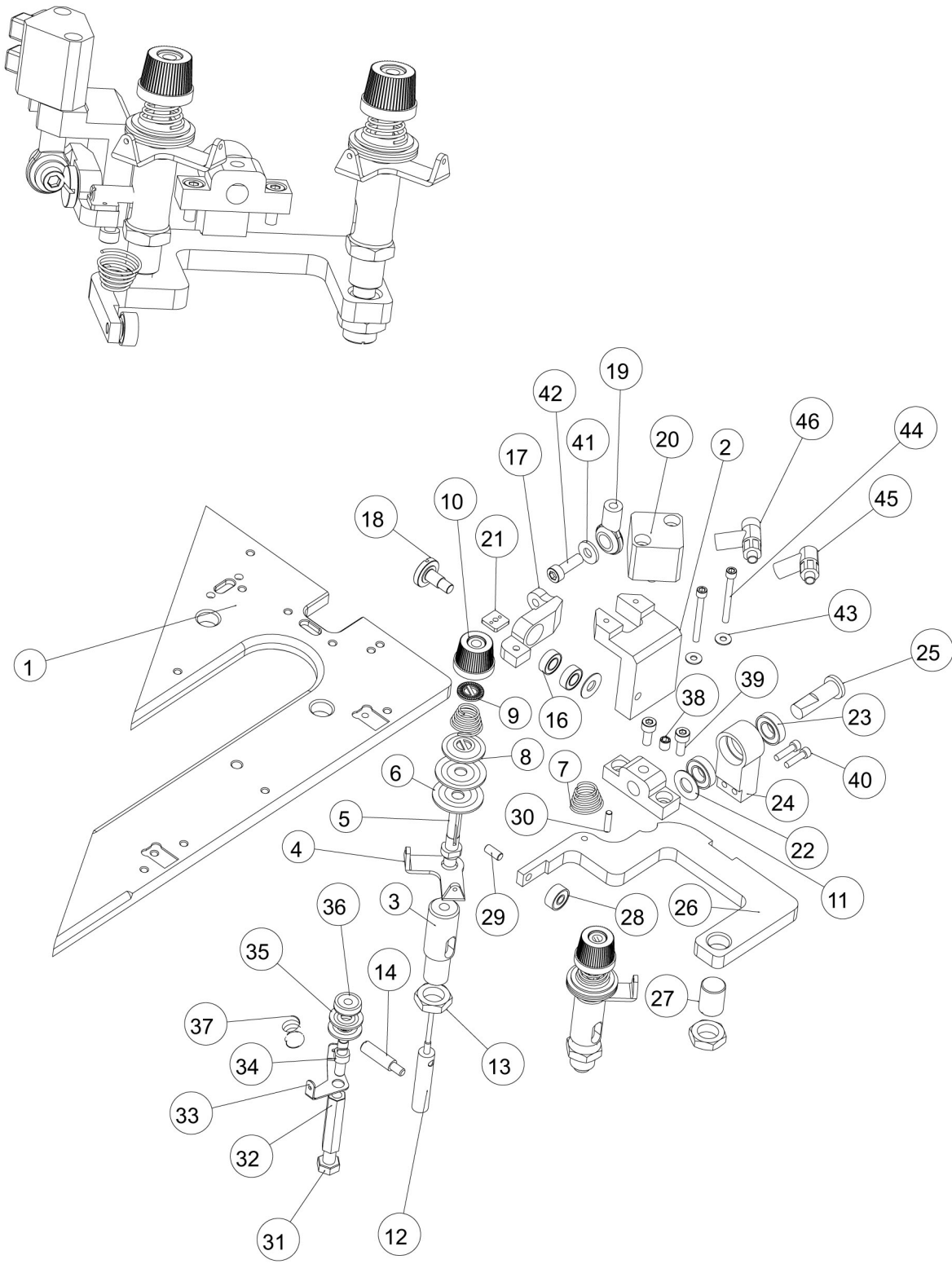
THREAD TAKE UP ASSEMBLY



THREAD TAKE UP ASSEMBLY

ITEM NO.	PART NUMBER	DESCRIPTION	QTY.
1	STBP-1800	BASE PLATE	1
2	TTU-001	KNOTTING GEAR BOX	1
3	MB-1484	BEARING	6
4	TTU-002	GEAR SHAFT	1
5	TTU-003	GEAR SHAFT	1
6	TTU-004	GEAR	1
7	TTU-005	GEAR	1
8	TTU-006	ACTUATOR	1
9	TTU-007	THREAD PULLER BASE	1
10	BS-600	BEARING SHIM	2
11	TTU-008	THREAD PULLER	1
12	TTU-009	THREAD RETAINER	1
13	TTU-010	CONNECTOR	1
14	PBD-402	BEAD	3
15	TTU-011	STOPPER RUBBER	2
16	TTU-012	GEAR BOX COVER	1
17	GS-405	GRUB SCREW	4
18	ACH-418	ALLEN SCREW	1
19	ACH-414	ALLEN SCREW	3
20	CCP-800	CIRCLIP	3
21	GS-506	GRUB SCREW	1
22	SD-316	SPLIT DOWEL	1
23	RH-306	ROUND HEAD SCREW	4

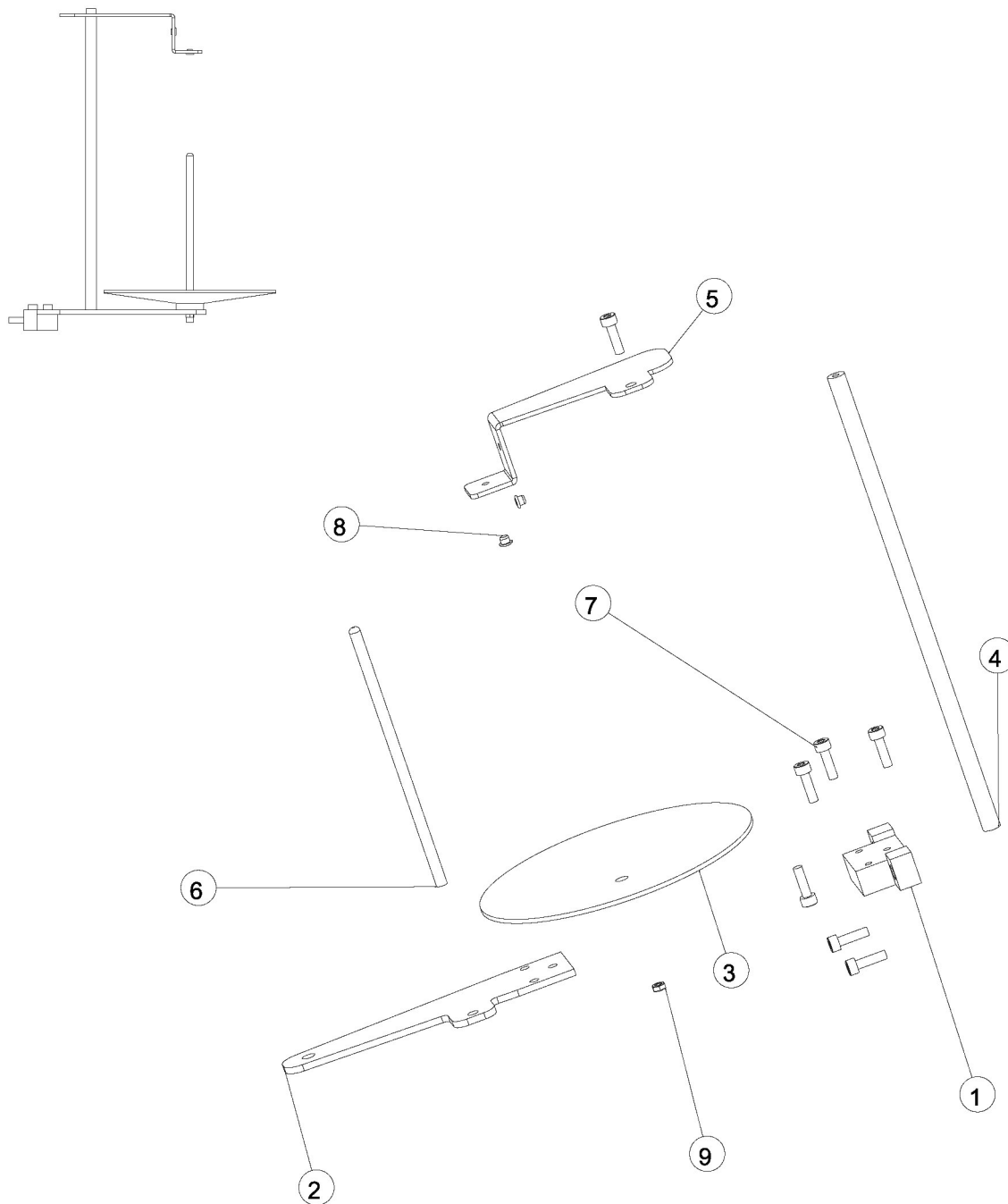
THREAD TENSION ASSEMBLY



THREAD TENSION ASSEMBLY

ITEM NO.	PART NUMBER	DESCRIPTION	QTY.
1	STBP-1800	BASE PLATE	1
2	TTN-001	CYLINDER MOUNTING BLOCK	1
3	TTN-002	THREAD TENSION PILLER	2
4	TTN-003	THREAD GUIDE	2
5	TTN-004	DISC STAND	2
6	TTN-005	TENSON DISC	4
7	TTN-006	SPRING	3
8	TTN-007	RELEASER DISC	2
9	TTN-008	CLUTCH DISC	2
10	TTN-009	KNOB	2
11	TTN-010	U-BRACKET MOUNTING BLOCK	1
12	TTN-011	RELEASING PIN	2
13	NT-1201	NUT	3
14	TTN-012	RELEASE PIN ACTUATOR	1
15	BS-600	BEARING SHIM	1
16	MB-1264	BEARING	2
17	TTN-013	WRAPPING TENSION RELEASE LEVER	1
18	HS-6005	HINGE SCREW	1
19	TTN-014	CONNECTOR	1
20	TTN-015	CYLINDER	1
21	TTN-016	SUPPORT PLATE	1
22	BS-600	BEARING SHIM	1
23	MB-1684	BEARING	2
24	TTN-017	U-BRACKET HOLDER	1
25	TTN-018	U - Bracket Fixing Pin	1
26	TTN-019	U-BRACKET	1
27	TTN-020	U[BRACKET HEIGHT ADJUSTER	1
28	MB-1044	BEARING	1
29	TTN-021	U-BRACKET BEARING PIN	1
30	TTN-022	SPRING STAND PIN	1
31	NT-600	NUT	1
32	TTN-023	AUXULARY TENSION PILLER	1
33	TTN-024	AUXULARY THREAD GUIDE	1
34	TTN-025	SLIT PIN	1
35	TTN-026	AUXULARY TENSION DISC	2
36	TTN-027	THUMB NUT	1
37	TTN-028	SPRING	1
38	GS-506	GRUB SCREW	1
39	ACH-410	ALLEN SCREW	2
40	ACH-312	ALLEN SCREW	2
41	FW-500	FLAT WASHER	1
42	ACH-515	ALLEN SCREW	1
43	FW-300	FLAT WASHER	2
44	ACH-330	ALLEN SCREW	2
45	LB-405	L- BOW CONNECTOR	1
46	SC-405	CONTROLLER	1

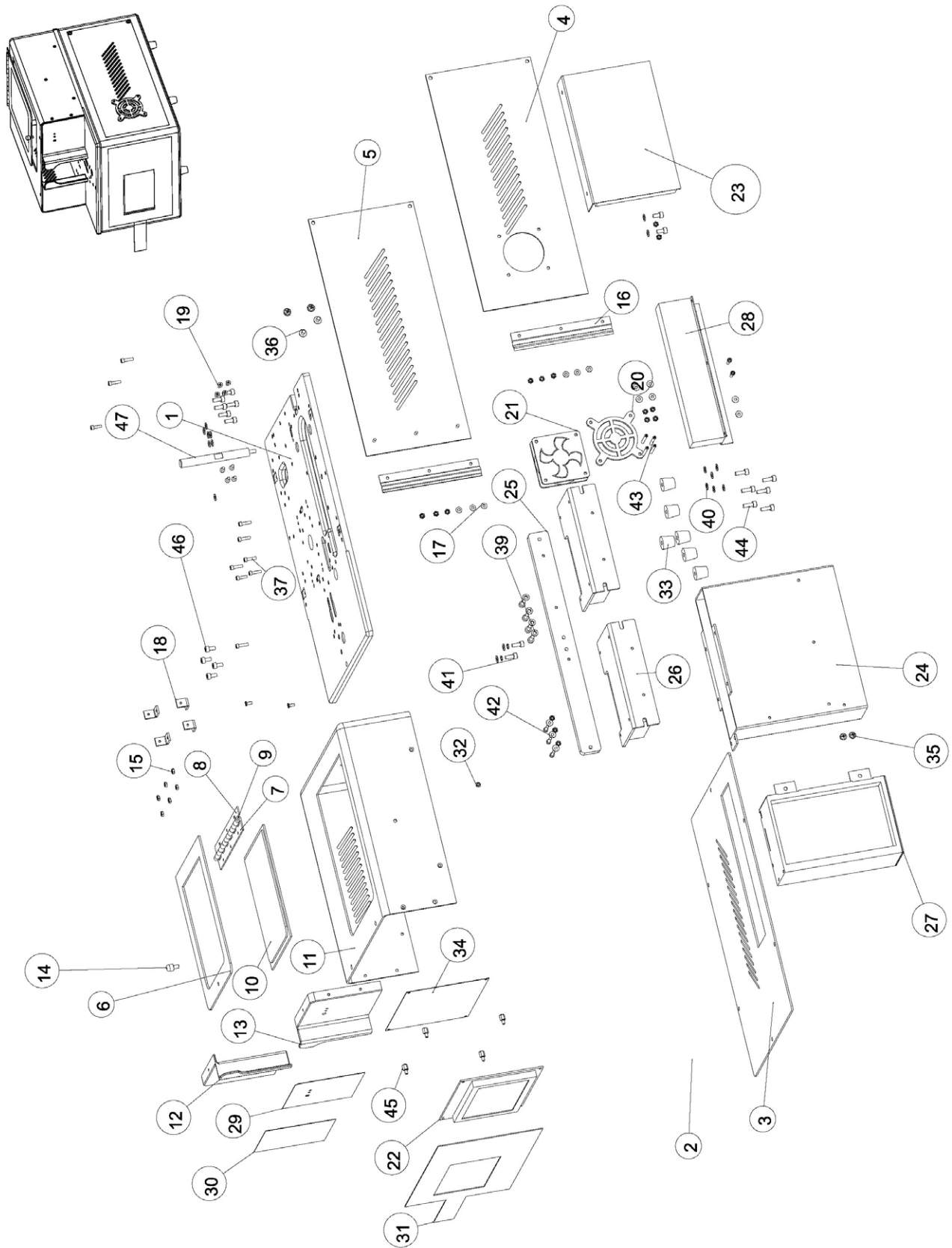
THREAD STAND



THREAD STAND

ITEM NO.	PART NUMBER	DESCRIPTION	QTY.
1	TS-001	THREAD STAND BASE	1
2	TS-002	HOLDER PLATE	1
3	TS-003	CONE BASE	1
4	TS-004	PILLER	1
5	TS-005	GUIDE PLATE	1
6	TS-006	ROD	1
7	ACH-414	ALLEN SCREW	7
8	PBD-402	BEAD	2
9	NT-400	NUT	1

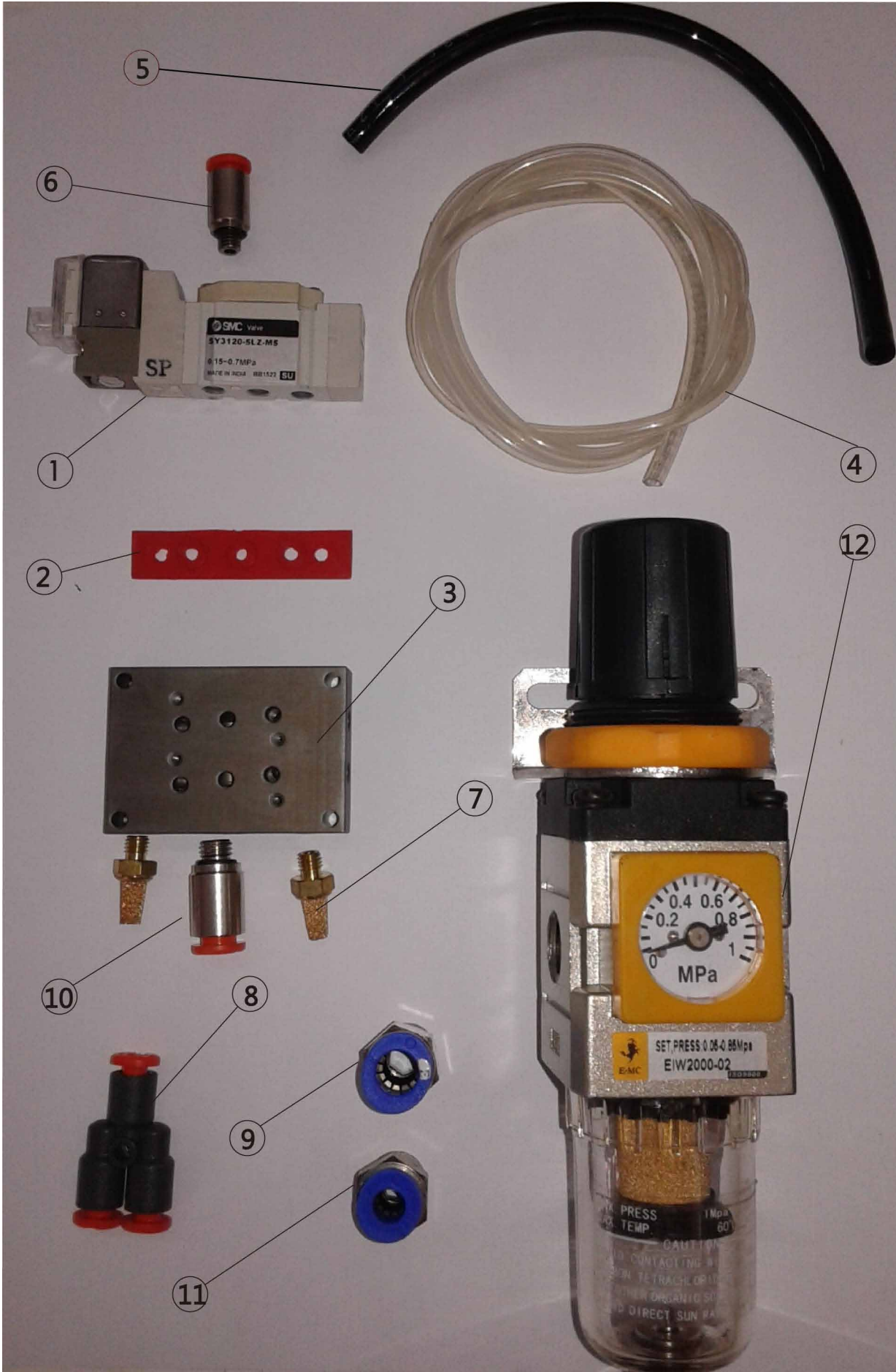
CABINET HOUSING ACCESSORIES



CABINET HOUSING ACCESSORIES

ITEM NO.	PART NUMBER	DESCRIPTION	QTY.
1	STBP-1800	BASE PLATE	1
2	HBA-001	MAIN BODY	1
3	HBA-002	BOTTOM COVER	1
4	HBA-003	SIDE COVER RIGHT	1
5	HBA-004	SIDE COVER LEFT	1
6	HBA-005	TOP DOOR	1
7	HBA-006	HINGE ASSEMBLY	1
8	HBA-006	HINGE ASSEMBLY	1
9	HBA-006	HINGE ASSEMBLY	1
10	HBA-007	DOOR GLASS	1
11	HBA-008	TOP COVER	1
12	HBA-009	TOP FRONT LEFT	1
13	HBA-010	TOP FRONT RIGHT	1
14	HBA-011	DOOR KNOB	1
15	NT-300	NUT	21
16	HBA-012	SPRING PLATE	2
17	FW-300	FLAT WASHER	6
18	HBA-013	TOP COVER L-CLAMP	4
19	CSK-306	CSK SCREW	10
20	HBA-014	FAN GRILL	1
21	HBA-015	MINIATURE FAN	1
22	HBA-016	DISPLAY	1
23	HBA-017	MOTHER BOARD	1
24	HBA-018	RETAINER COMPARTMENT	1
25	HBA-019	DRIVE FIXING BRACKET	1
26	HBA-020	DRIVE	3
27	HBA-021	SMPS	1
28	HBA-022	POWER BOARD	1
29	HBA-023	TOP FRONT STICKER RIGHT	1
30	HBA-024	TOP FRONT STICKER LEFT	1
31	HBA-025	MEMBRANE	1
32	PBD-402	BEAD	1
33	HBA-026	BUSH	6
34	HBA-027	DISPLAY SHEILD	1
35	WHS-306	WASHER HEAD SCREW	2
36	WHS-406	WASHER HEAD SCREW	4
37	ACH-312	ALLEN SCREW	9
38	ACH-310	ALLEN SCREW	7
39	SW-400	SPRING WASHER	6
40	FW-400	FLAT WASHER	20
41	ACH-410	ALLEN SCREW	12
42	FW-300	FLAT WASHER	10
43	RHS-325	WASHER HEAD SCREW	4
44	ACH-412	ALLEN SCREW	6
45	HBA-028	STUD	4
46	ACH-408	ALLEN SCREW	6
47	HBA-029	STAND	1

PNEUMATIC ACCESSORIES



PNEUMATIC ACCESSORIES

ITEM NO.	PART NUMBER	DESCRIPTION	QTY.
1	PNE-001	SOLENOID	2
2	PNE-002	GASKET	2
3	PNE-003	MANIFOLD	1
4	PNE-004	2.5X4 TUBE	1.5MTR
5	PNE-005	4X6 TUBE	0.1MTR
6	PNE-006	4X5 CONNECTOR	3
7	PNE-007	SILENCER	2
8	PNE-008	Y-CONNECTOR	1
9	PNE-009	1/4X8 CONNECTOR	1
10	PNE-010	7X4 CONNECTOR	1
11	PNE-011	1/4X6 CONNECTOR	1
12	PNE-012	FILTER REGULATOR	1

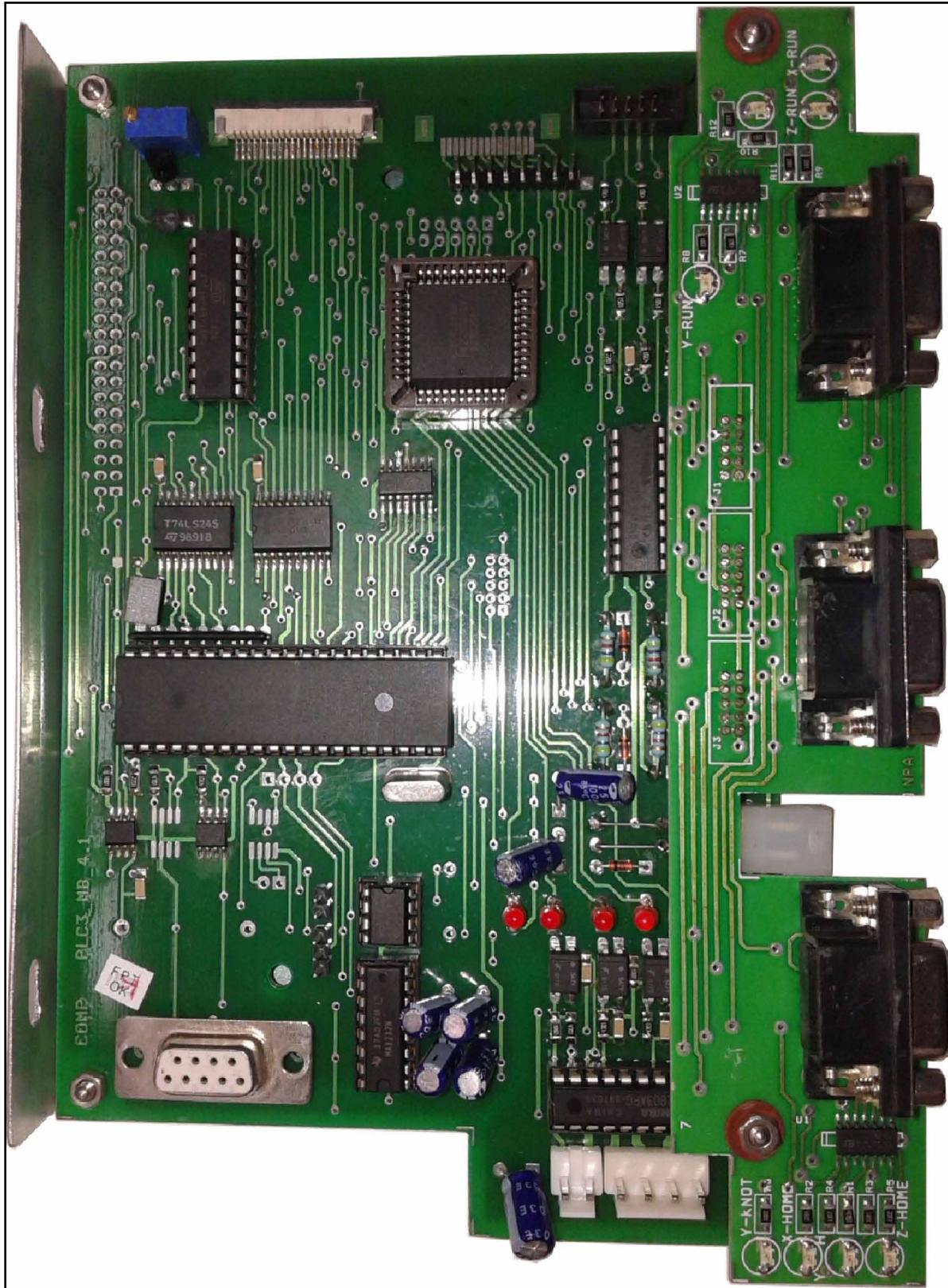
ELECTRICAL AND ELECTRONICS

PART NUMBER: HBA-016
DESCRIPTION: DISPLAY
QUANTITY: 1 NUMBER



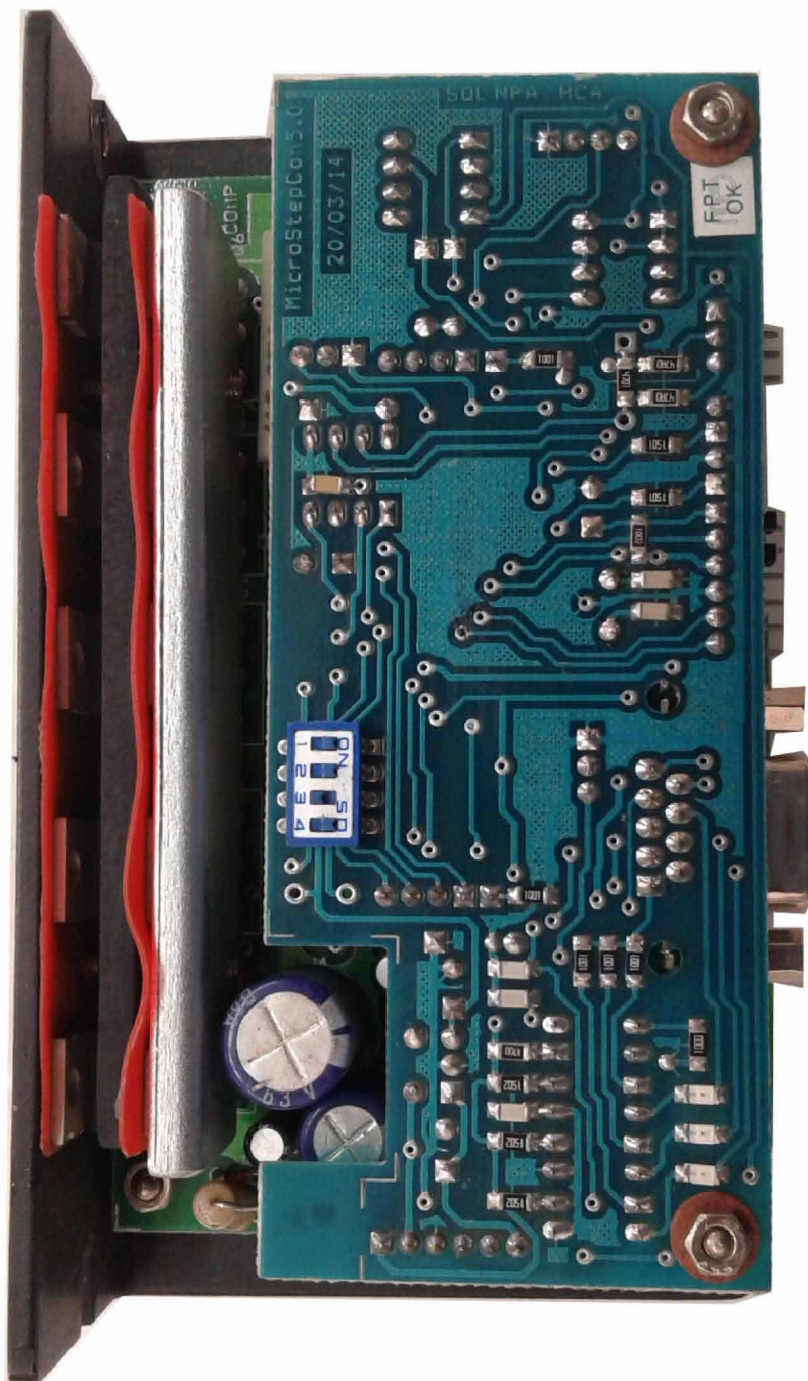
ELECTRICAL AND ELECTRONICS

PART NUMBER: HBA-017
DESCRIPTION: MOTHER BOARD
QUANTITY: 1 NUMBER

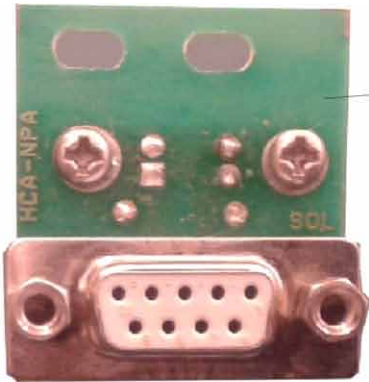


ELECTRICAL AND ELECTRONICS

PART NUMBER: SM-200
DESCRIPTION: STEPPING MOTOR DRIVE BOARD
QUANTITY: 3 NUMBER



ELECTRICAL AND ELECTRONICS



PART#: KGB-009
KNOTTING SENSOR BOARD

PART#: WA-010
WRAPPING SENSOR BOARD



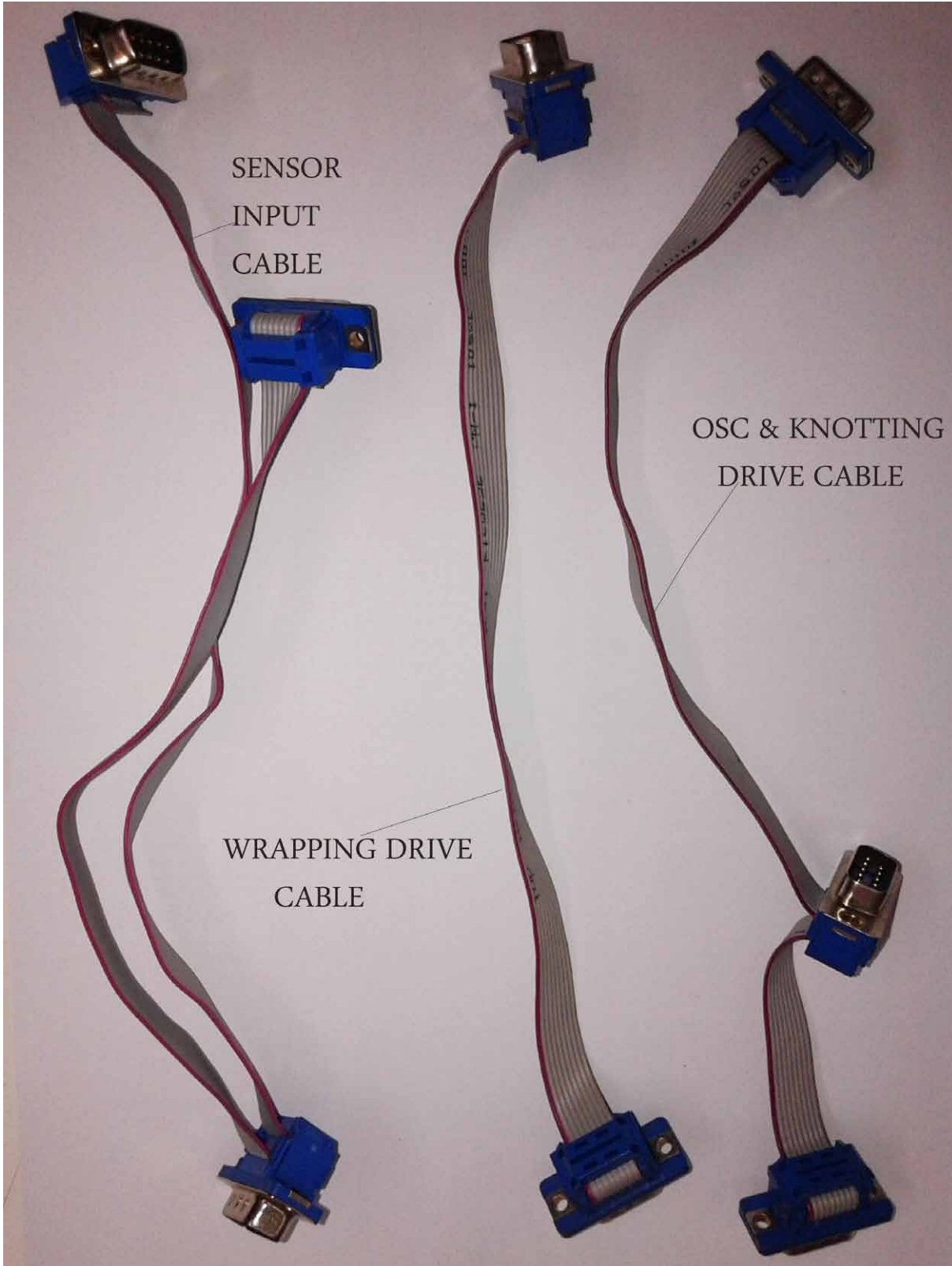
PART#: WA-020
FLAT CABLE



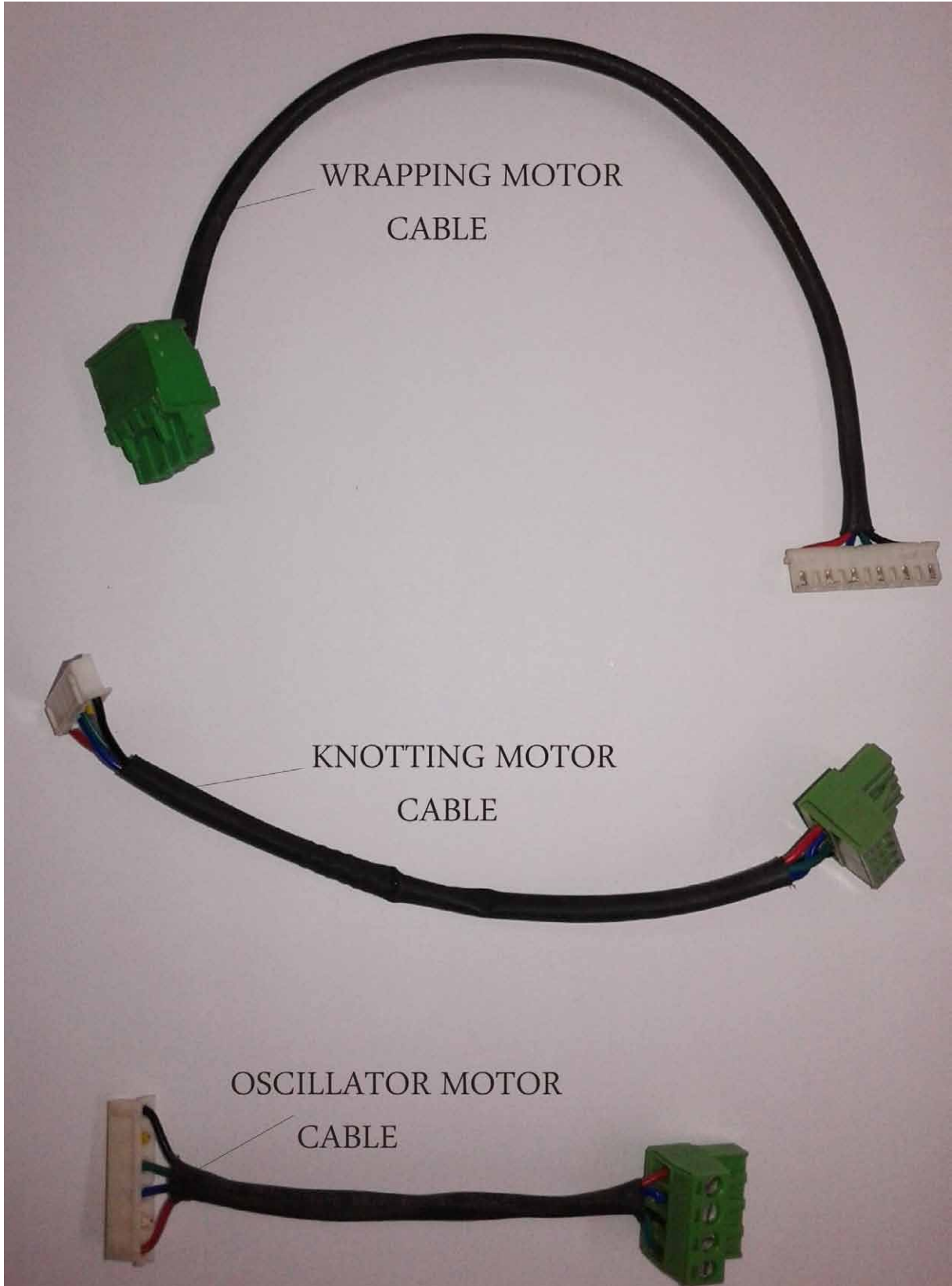
PART#: WA-016
OSC SENSOR BOARD WITH
X-BUS



ELECTRICAL AND ELECTRONICS

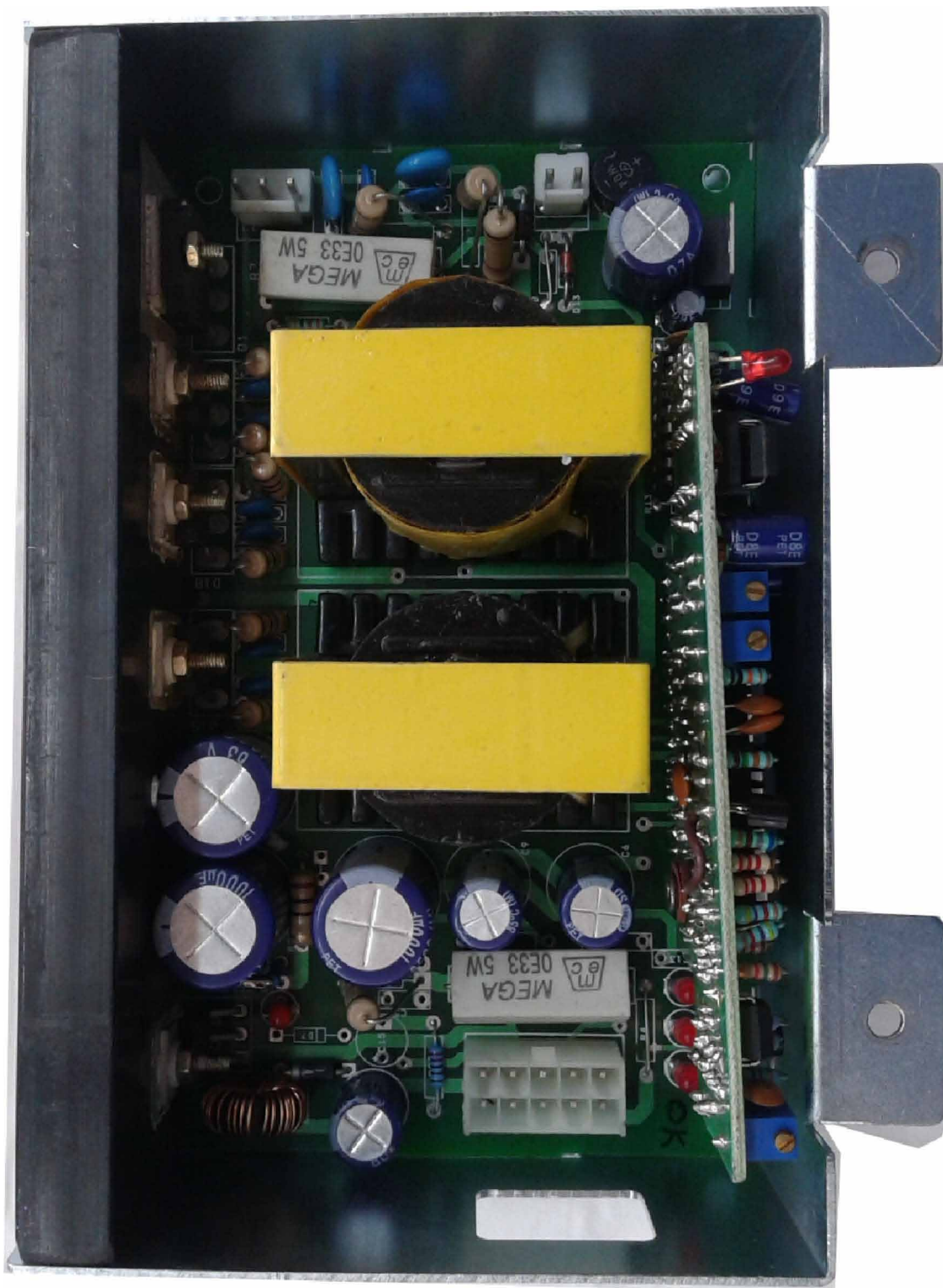


ELECTRICAL AND ELECTRONICS



ELECTRICAL AND ELECTRONICS

PART NUMBER: HBA-021
DESCRIPTION: SMPS
QUANTITY: 1 NUMBER



ELECTRICAL AND ELECTRONICS

PART NUMBER: HBA-022
DESCRIPTION: POWER BOARD
QUANTITY: 1 NUMBER



ELECTRICAL AND ELECTRONICS

AC SOCKET WITH SWITCH



MAINS WIRE

