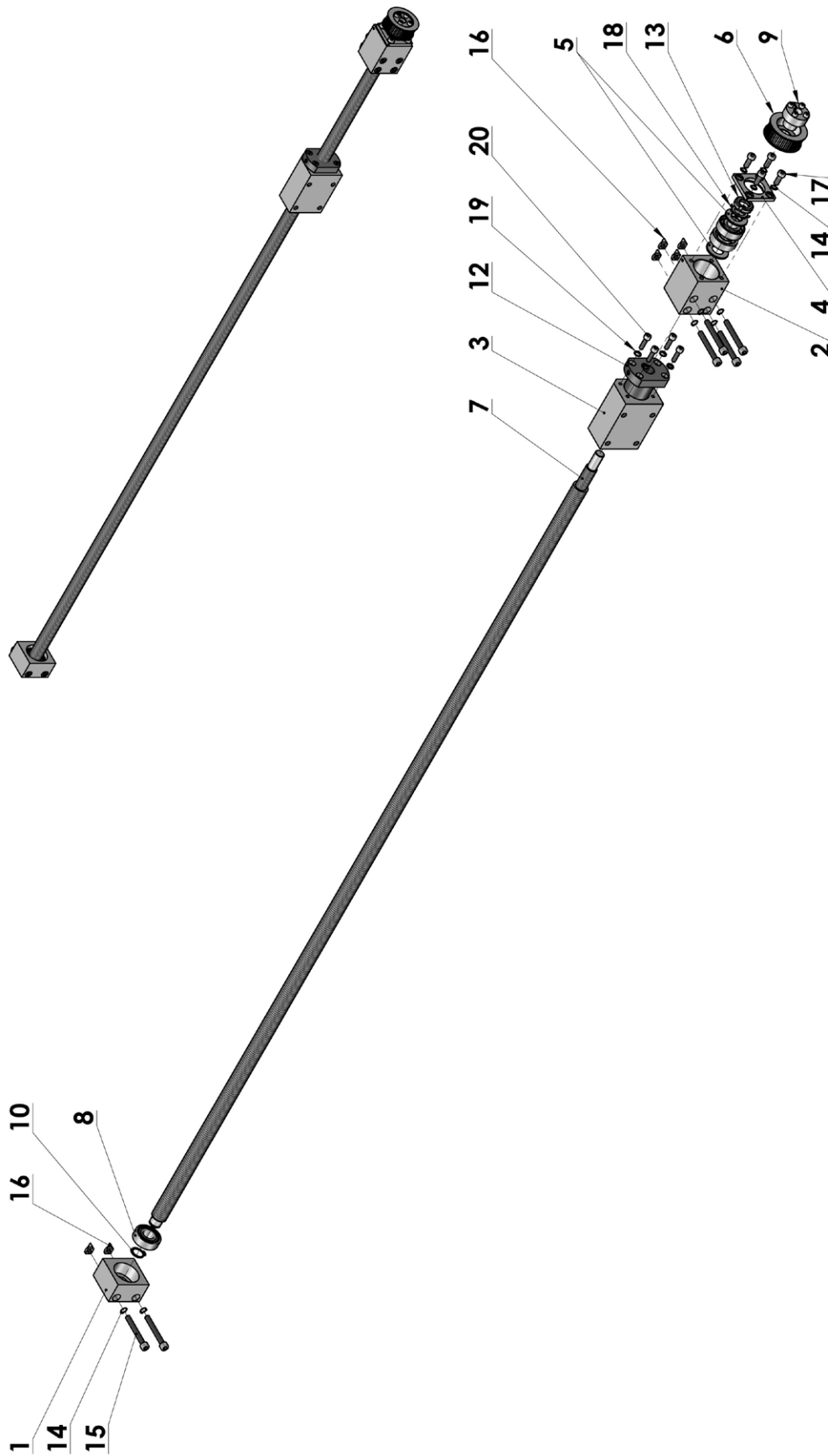


## TABLE OF CONTENTS

---

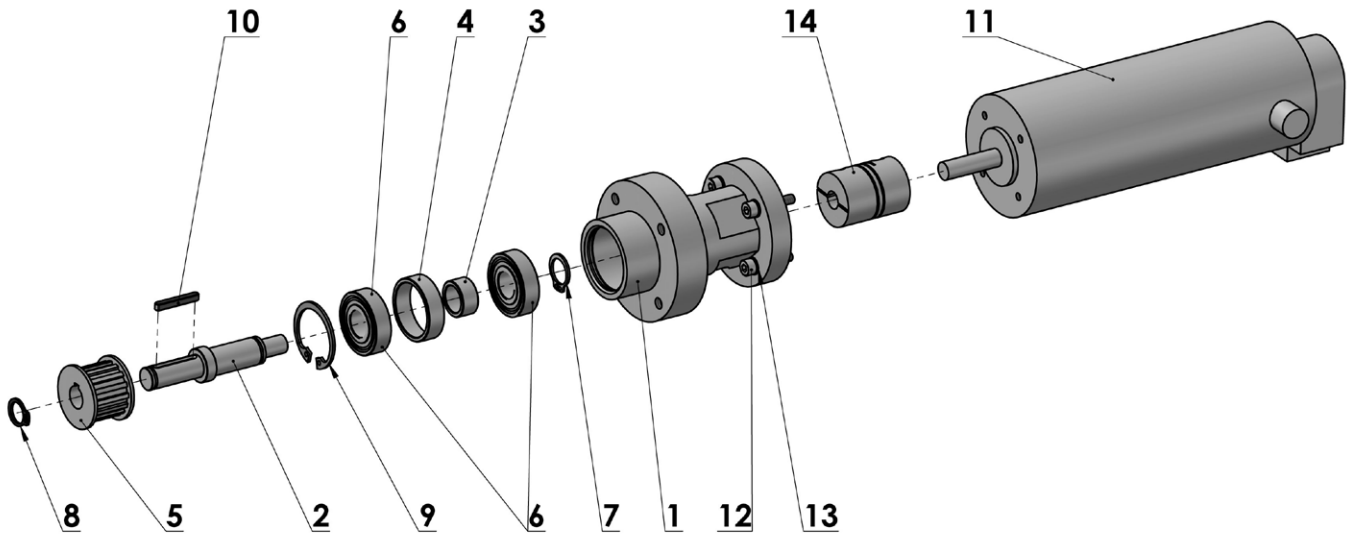
SCREW X AXIS ASSEMBLY.....	3-2
X AXIS DRIVE - ASSEMBLY.....	3-4
BACK PLATE.....	3-6
Z AXIS - ASSEMBLY.....	3-8
Y AXIS SCREW - ASSEMBLY.....	3-10
Y AXIS DRIVE - ASSEMBLY.....	3-12
SPINDLE - ASSEMBLY.....	3-14
PORTAL ASSEMBLY.....	3-16
Z AXIS SENSORS.....	3-18
VACUUM SYSTEM - ASSEMBLY.....	3-20
MAIN ASSEMBLY.....	3-22

# SCREW X AXIS - ASSEMBLY



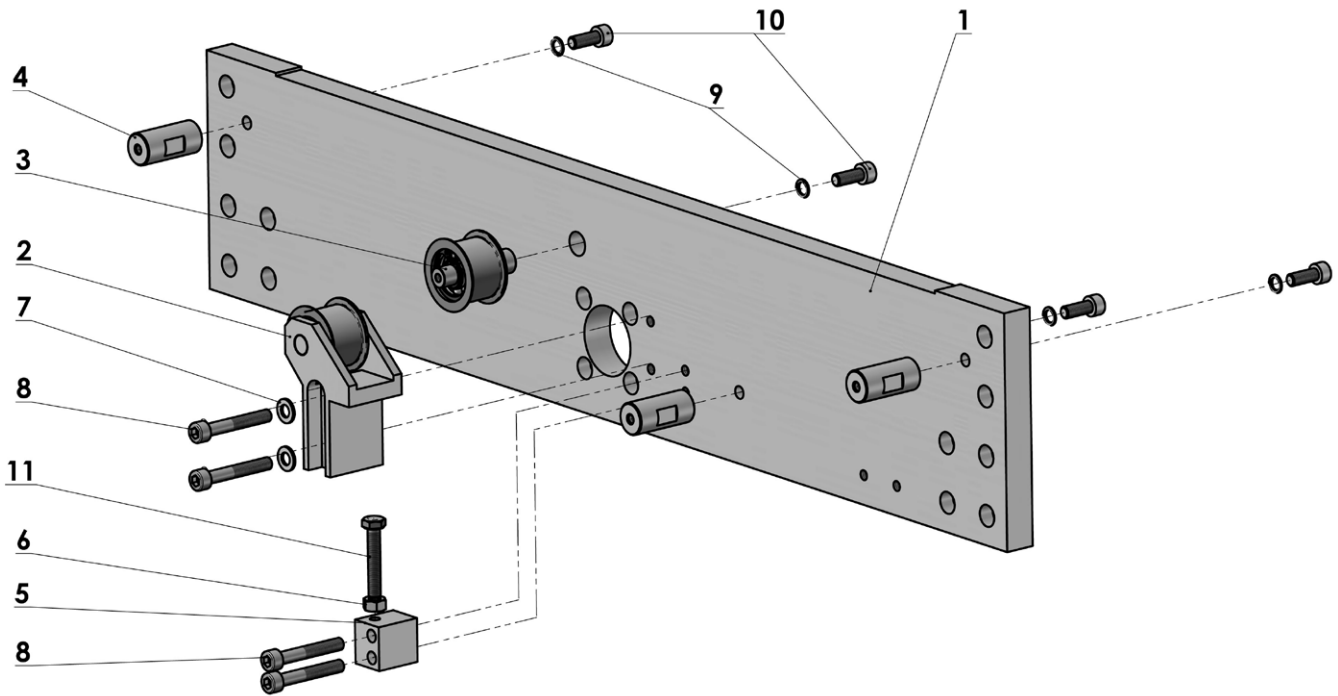


# X AXIS DRIVE - ASSEMBLY





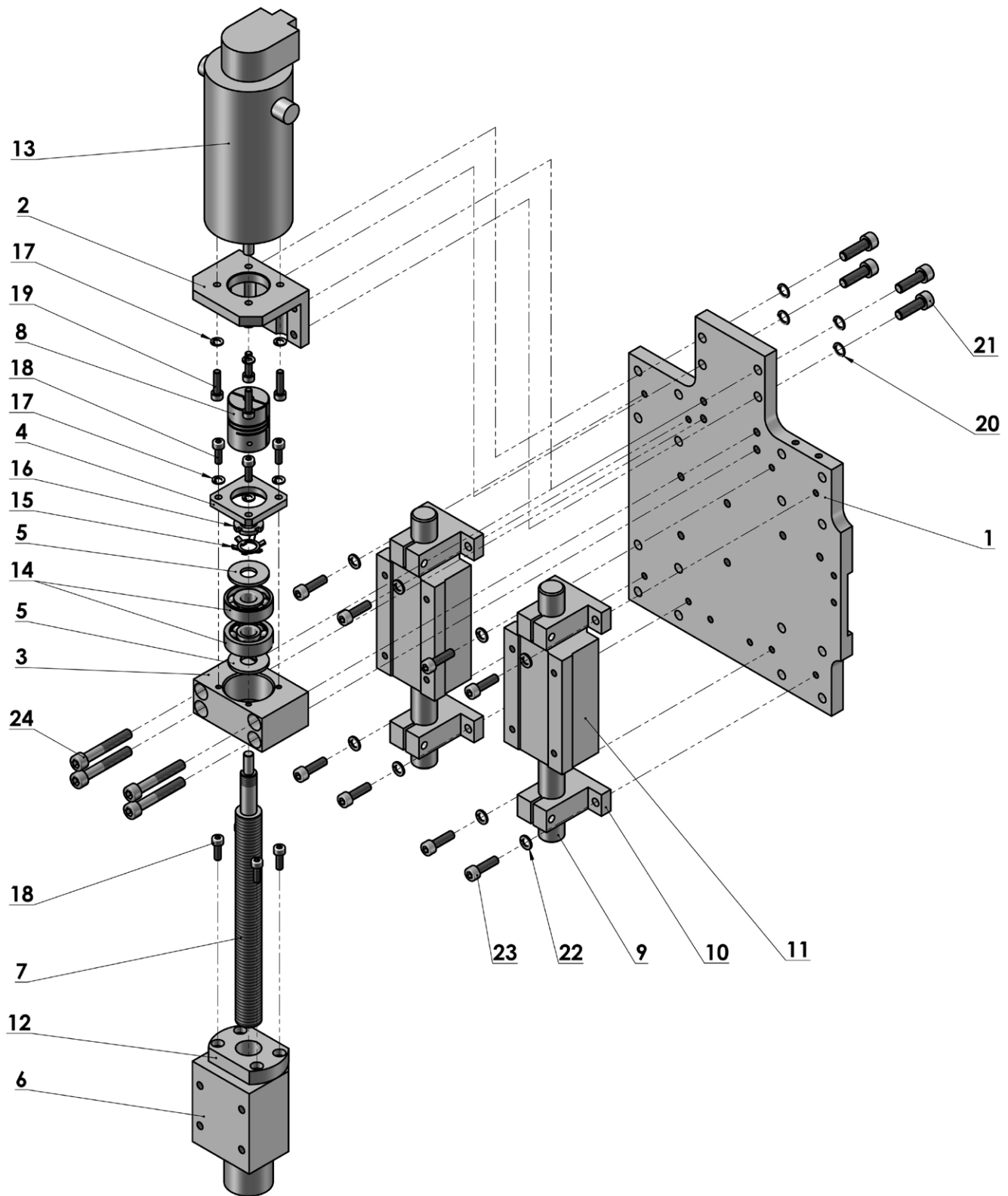
# BACK PLATE



**BACK PLATE**

DET	PART NUMBER	DESCRIPTION	QTY.
01	86.1008.0.600	BACK PLATE	1
02	86.1009.0.050	TENSION PULLEY ASM.	1
03	86.1010.0.050	FIXED PULLEY ASM.	1
04	86.1011.0.300	PILLAR	3
05	86.1012.0.600	BLOCK	1
06	08.6702.6.000	NUT M6	1
07	08.6852.6.000	WASHER 6,4	2
08	08.6002.6.040	SCREW M6	4
09	08.6802.6.000	SPRING WASHER M6	4
10	08.6002.6.016	SCREW M6	4
11	08.6312.6.035	SCREW M6	1

# Z AXIS - ASSEMBLY

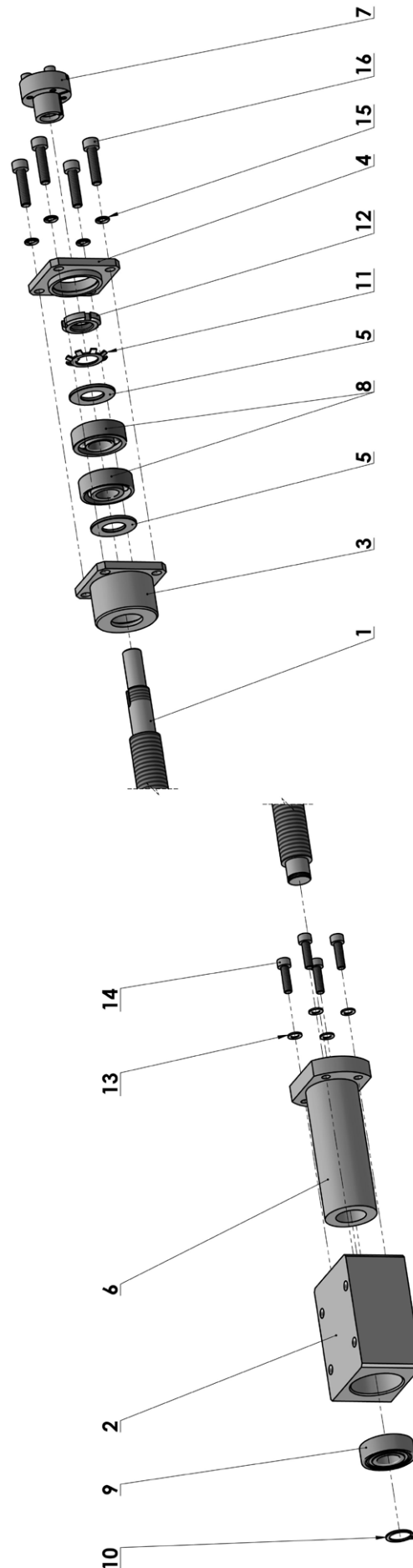




**Z AXIS - ASSEMBLY**

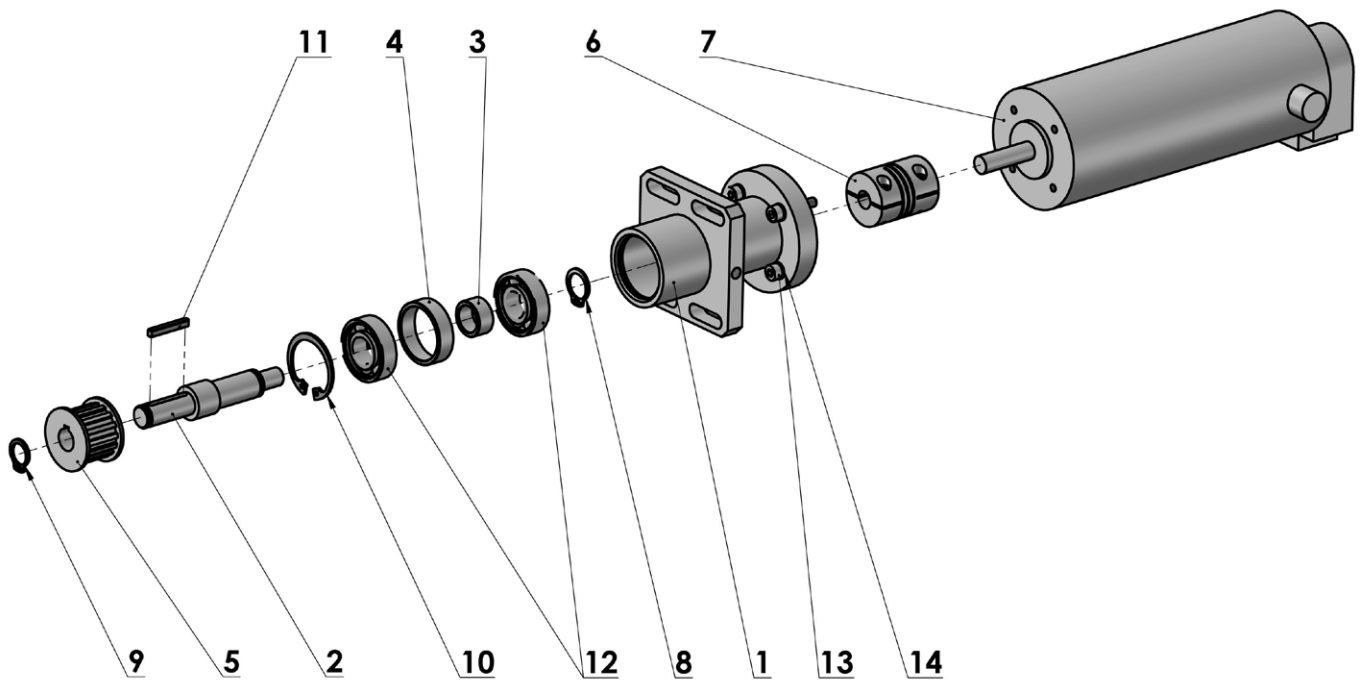
DET	PART NUMBER	DESCRIPTION	QTY.
01	86.1024.0.600	PLATE	1
02	86.1025.0.600	DRIVE HOLDER	1
03	86.1026.0.600	HOUSING	1
04	86.1027.0.600	CAP	1
05	86.1028.0.800	WASHER	2
06	86.1029.0.600	MUTTER HOUSING	1
07	86.1030.0.300	SCREW	1
08	86.1035.0.500	COUPLING - ADAPTATION	1
09	12.2099.4.003	ROD	2
10	12.2099.4.001	HOLDER	4
11	12.2099.4.002	LINEARSET	2
12	12.2099.3.005	BALL MUTTER	1
13	12.0010.4.272	SERVOMOTOR	1
14	12.2010.0.034	BALL BEARING	2
15	08.6890.0.000	LOCK WASHER	1
16	08.6792.0.300	NUT M10	1
17	08.6802.4.000	SPRING WASHER M4	8
18	08.6002.4.012	SCREW M4	8
19	08.6002.4.016	SCREW M4	4
20	08.6802.6.000	SPRING WASHER M6	4
21	08.6002.6.020	SCREW M6	4
22	08.6802.5.000	SPRING WASHER M5	8
23	08.6002.5.018	SCREW M5	8
24	08.6002.6.040	SCREW M6	4

# Y AXIS SCREW - ASSEMBLY



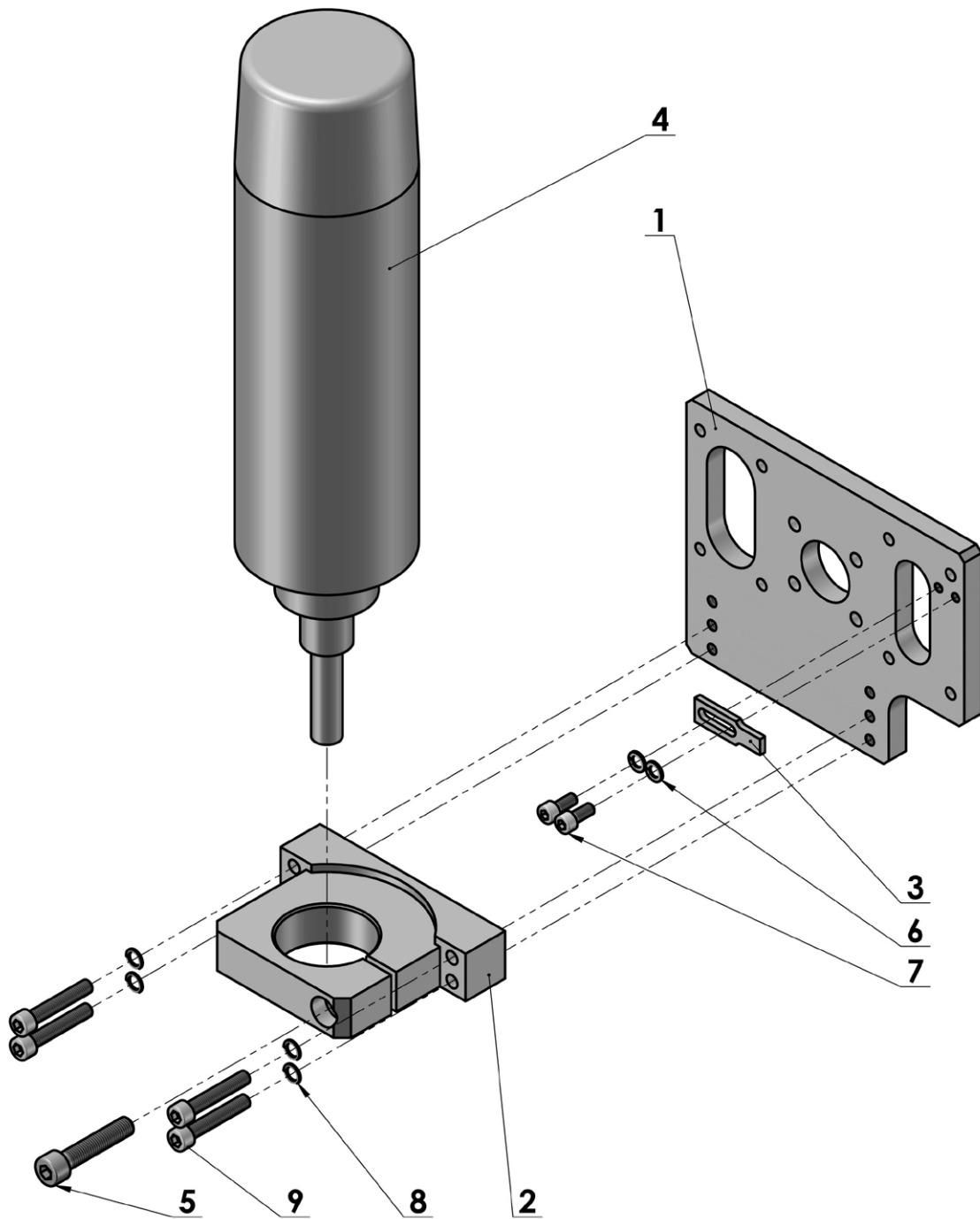


# Y AXIS DRIVE - ASSEMBLY



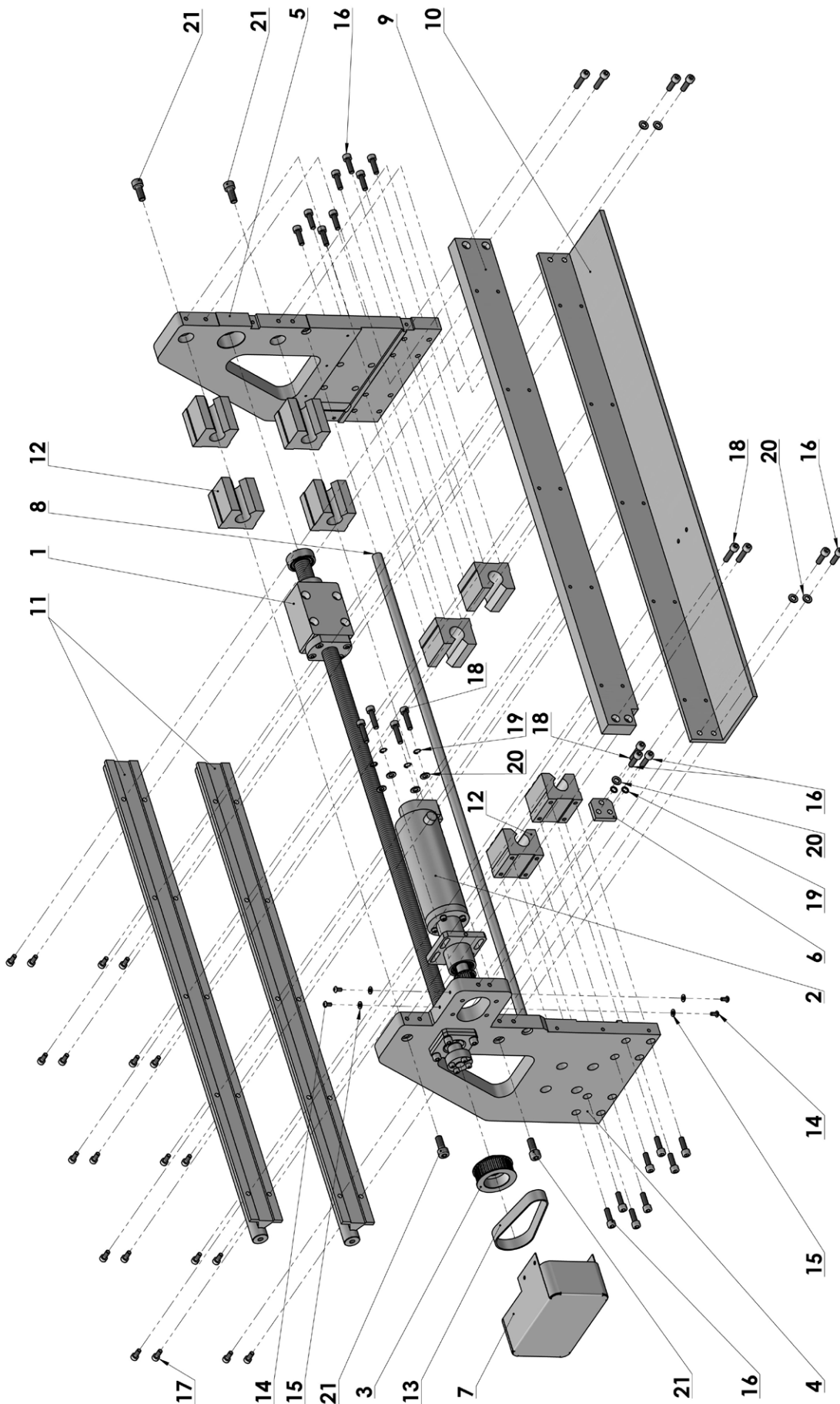


# SPINDLE - ASSEMBLY





# PORTAL ASSEMBLY

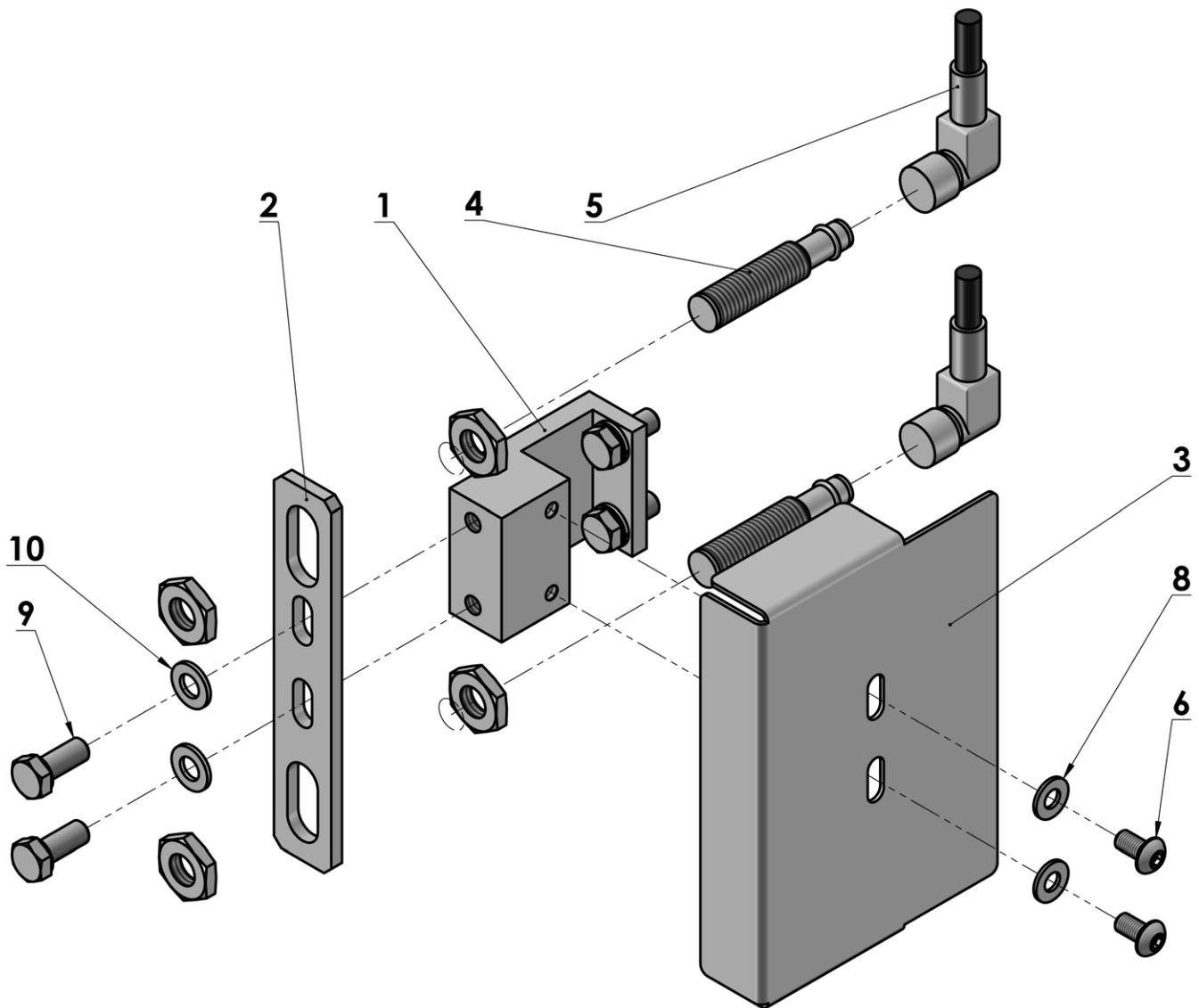




**PORTAL ASSEMBLY**

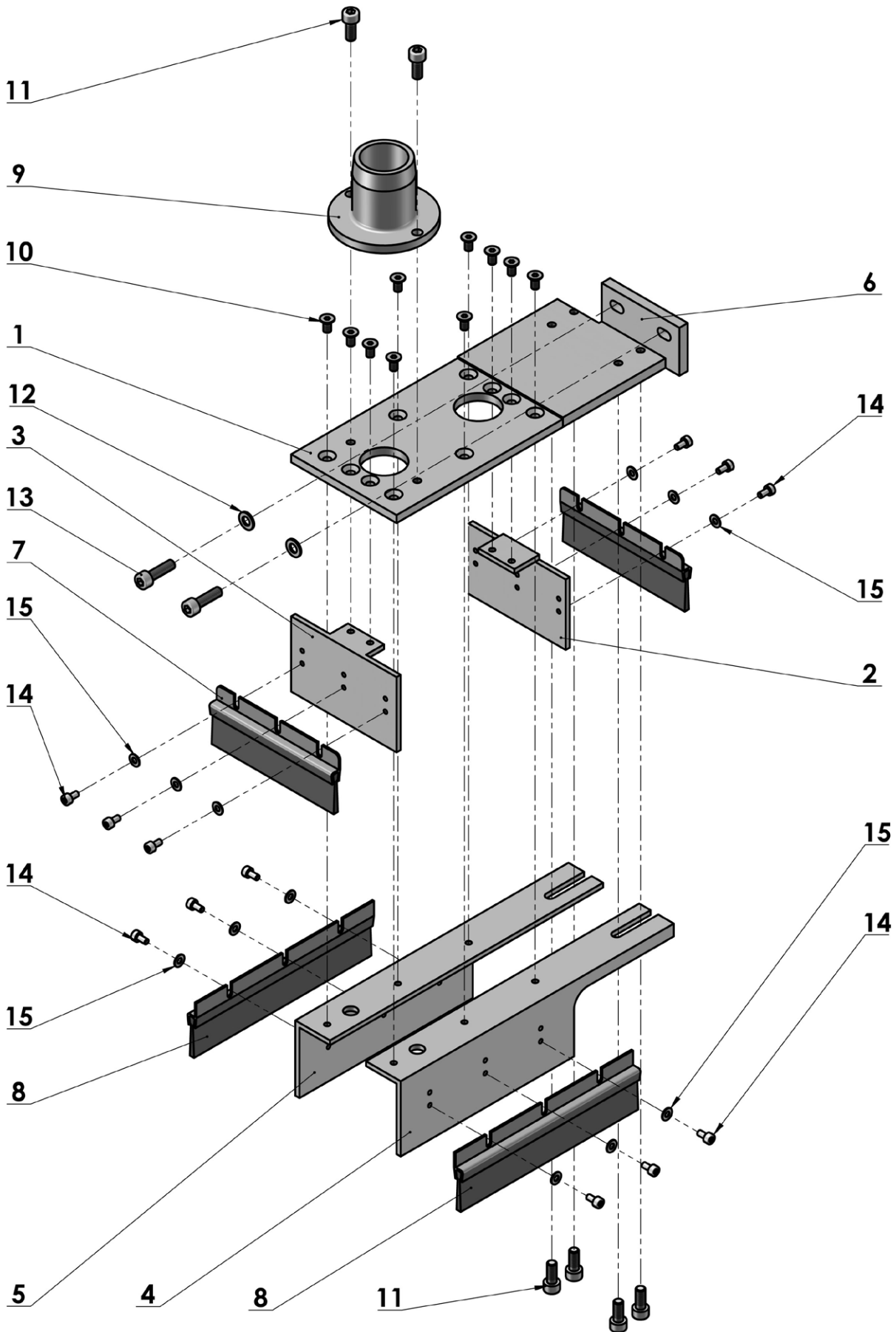
DET	PART NUMBER	DESCRIPTION	QTY.
01	86.1000.0.055	Y AXIS SCREW - ASSM.	1
02	86.1000.0.056	Y AXIS DRIVE - ASSM.	1
03	86.1006.0.500	PULLEY	1
04	86.1043.0.600	SIDEBOARD	1
05	86.1044.0.600	SIDEBOARD	1
06	86.1045.0.800	HOLDER	1
07	86.1047.0.800	COVER	1
08	86.1048.0.400	TUBE	1
09	86.1058.0.600	SUPPORT	1
10	86.1059.0.600	SUPPORT	1
11	86.1060.0.600	RAIL	2
12	12.2099.4.005	LINEARSET	8
13	12.5050.2.031	BELT	1
14	08.6202.4.008	SCREW M4	4
15	08.6852.4.000	WASHER M4	4
16	08.6002.6.020	SCREW M6	22
17	08.6002.5.012	SCREW M5	20
18	08.6002.6.025	SCREW M6	9
19	08.6802.6.000	SPRING WASHER M6	6
20	08.6852.6.000	WASHER 6,4	9
21	08.6002.8.020	SCREW M8	4

# Z AXIS SENSORS



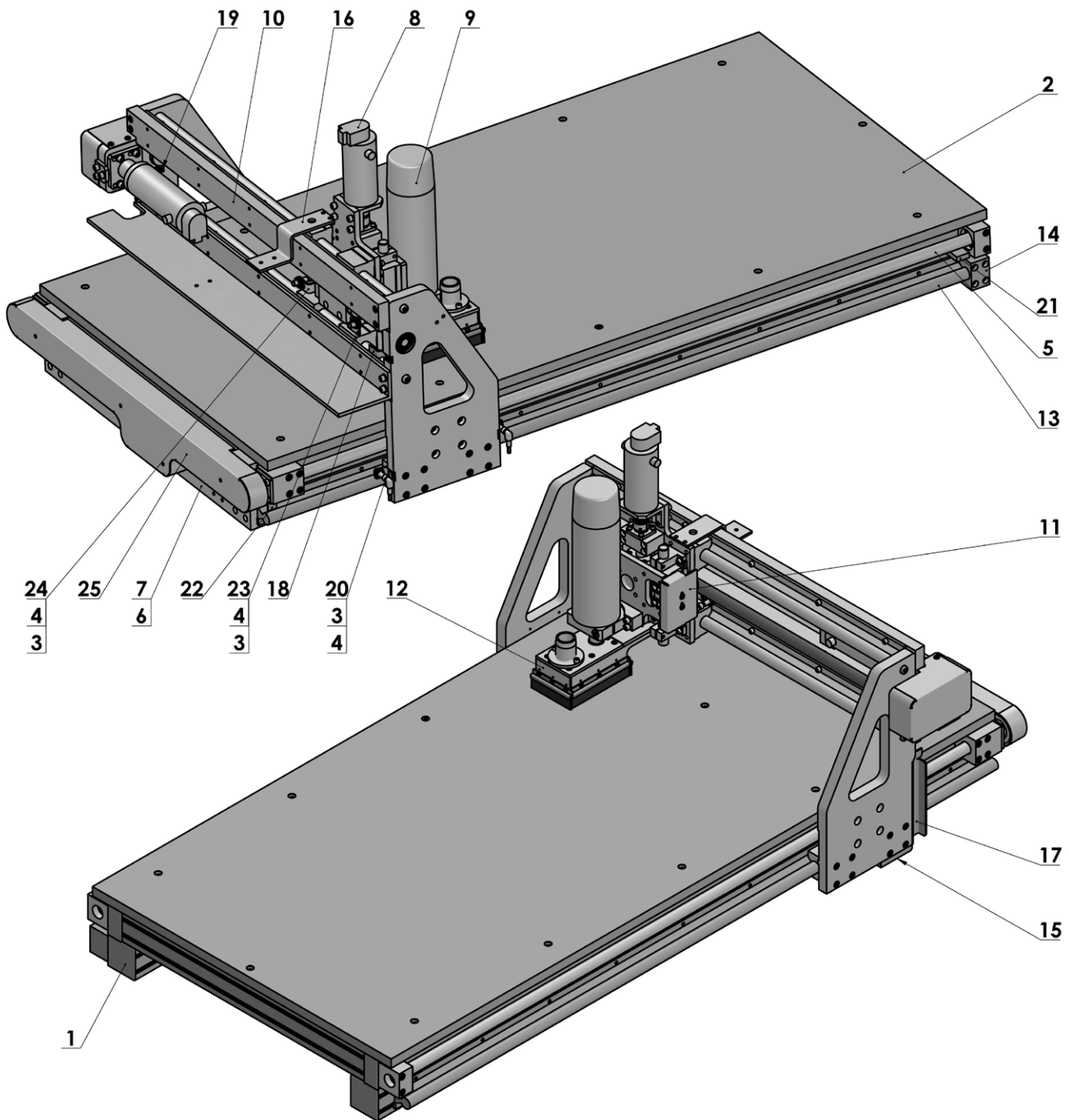


# VACUUM SYSTEM - ASSEMBLY





# MAIN ASSEMBLY









**INDEX**

PART NUMBER	PAGE	DET	QTY	PART NUMBER	PAGE	DET	QTY	PART NUMBER	PAGE	DET	QTY
04.9086.0.002	3-23	1	1	08.6802.6.000	3-15	8	4	12.4030.0.322	3-5	10	1
04.9086.0.901	3-23	2	1	08.6802.6.000	3-17	19	6	12.4030.0.322	3-13	11	1
08.6000.8.040	3-15	5	1	08.6852.3.000	3-21	15	12	12.5050.2.031	3-17	13	1
08.6002.3.006	3-21	14	12	08.6852.4.000	3-17	15	4	86.1000.0.051	3-23	5	2
08.6002.4.012	3-9	18	8	08.6852.4.000	3-19	08	2	86.1000.0.052	3-23	6	1
08.6002.4.016	3-9	19	4	08.6852.5.000	3-19	10	2	86.1000.0.053	3-23	7	1
08.6002.4.020	3-5	12	4	08.6852.5.000	3-21	12	6	86.1000.0.054	3-23	8	1
08.6002.4.020	3-13	13	4	08.6852.6.000	3-7	7	2	86.1000.0.055	3-17	1	1
08.6002.5.012	3-15	7	4	08.6852.6.000	3-17	20	9	86.1000.0.056	3-17	2	1
08.6002.5.012	3-17	17	20	08.6890.0.000	3-9	15	1	86.1000.0.057	3-23	9	1
08.6002.5.012	3-21	11	6	08.6890.0.001	3-3	18	1	86.1000.0.058	3-23	10	1
08.6002.5.018	3-3	20	4	08.6890.0.001	3-11	11	1	86.1000.0.059	3-23	11	1
08.6002.5.018	3-9	23	8	08.7792.3.300	3-3	13	1	86.1000.0.063	3-23	12	1
08.6002.5.018	3-11	14	4	08.7792.3.300	3-11	12	1	86.1001.0.600	3-3	1	1
08.6002.5.018	3-21	13	2	12.0010.4.027	3-19	05	2	86.1002.0.600	3-3	2	1
08.6002.6.016	3-7	10	4	12.0010.4.027	3-23	3	4	86.1003.0.600	3-3	3	1
08.6002.6.020	3-9	21	4	12.0010.4.093	3-19	04	2	86.1004.0.600	3-3	4	1
08.6002.6.020	3-17	16	22	12.0010.4.093	3-23	4	4	86.1005.0.400	3-3	5	2
08.6002.6.025	3-11	16	4	12.0010.4.272	3-9	13	1	86.1005.0.400	3-11	5	2
08.6002.6.025	3-17	18	9	12.0010.4.273	3-5	11	1	86.1006.0.500	3-3	6	1
08.6002.6.035	3-15	9	4	12.0010.4.273	3-13	7	1	86.1006.0.500	3-17	3	1
08.6002.6.040	3-7	8	4	12.0010.4.274	3-15	4	1	86.1007.0.300	3-3	7	1
08.6002.6.040	3-9	24	4	12.0010.6.203	3-3	9	1	86.1008.0.600	3-7	1	1
08.6002.6.050	3-3	15	6	12.0010.6.203	3-11	7	1	86.1009.0.050	3-7	2	1
08.6002.8.020	3-17	21	4	12.1015.1.001	3-5	7	1	86.1010.0.050	3-7	3	1
08.6062.6.016	3-3	17	4	12.1015.1.001	3-13	8	1	86.1011.0.300	3-7	4	3
08.6102.4.008	3-21	10	10	12.1040.1.002	3-5	9	1	86.1012.0.600	3-7	5	1
08.6202.4.008	3-17	14	4	12.1040.1.002	3-13	10	1	86.1018.0.400	3-5	1	1
08.6202.4.008	3-19	06	2	12.1045.1.006	3-3	10	1	86.1019.0.300	3-5	2	1
08.6312.5.012	3-19	09	4	12.1045.1.006	3-11	10	1	86.1020.0.400	3-5	3	1
08.6312.6.035	3-7	11	1	12.1045.1.015	3-5	8	1	86.1020.0.400	3-13	3	1
08.6702.6.000	3-7	6	1	12.1045.1.015	3-13	9	1	86.1021.0.400	3-5	4	1
08.6792.0.300	3-9	16	1	12.2010.0.006	3-3	8	1	86.1021.0.400	3-13	4	1
08.6792.6.001	3-3	16	6	12.2010.0.006	3-11	9	1	86.1022.0.500	3-5	5	1
08.6802.4.000	3-5	13	4	12.2010.0.011	3-13	12	2	86.1022.0.500	3-13	5	1
08.6802.4.000	3-9	17	8	12.2010.0.012	3-5	6	2	86.1023.0.500	3-5	14	1
08.6802.4.000	3-13	14	4	12.2010.0.032	3-3	11	2	86.1023.0.500	3-13	6	1
08.6802.5.000	3-3	19	4	12.2010.0.032	3-11	8	2	86.1024.0.600	3-9	1	1
08.6802.5.000	3-9	22	8	12.2010.0.034	3-9	14	2	86.1025.0.600	3-9	2	1
08.6802.5.000	3-11	13	4	12.2099.3.004	3-3	12	1	86.1026.0.600	3-9	3	1
08.6802.5.000	3-15	6	4	12.2099.3.004	3-11	6	1	86.1027.0.600	3-9	4	1
08.6802.5.000	3-19	07	2	12.2099.3.005	3-9	12	1	86.1028.0.800	3-9	5	2
08.6802.6.000	3-3	14	10	12.2099.4.001	3-9	10	4	86.1029.0.600	3-9	6	1
08.6802.6.000	3-7	9	4	12.2099.4.002	3-9	11	2	86.1030.0.300	3-9	7	1
08.6802.6.000	3-9	20	4	12.2099.4.003	3-9	9	2	86.1032.0.600	3-11	2	1
08.6802.6.000	3-11	15	4	12.2099.4.005	3-17	12	8	86.1033.0.400	3-11	3	1

## INDEX

PART NUMBER	PAGE	DET	QTY	PART NUMBER	PAGE	DET	QTY	PART NUMBER	PAGE	DET	QTY
86.1034.0.600	3-11	4	1								
86.1035.0.500	3-9	8	1								
86.1036.0.300	3-11	1	1								
86.1037.0.400	3-13	1	1								
86.1038.0.300	3-13	2	1								
86.1039.0.600	3-15	1	1								
86.1040.0.600	3-15	2	1								
86.1041.0.800	3-15	3	2								
86.1043.0.600	3-17	4	1								
86.1044.0.600	3-17	5	1								
86.1045.0.800	3-17	6	1								
86.1047.0.800	3-17	7	1								
86.1048.0.400	3-17	8	1								
86.1050.0.600	3-19	1	1								
86.1051.0.800	3-19	02	1								
86.1052.0.800	3-19	03	1								
86.1058.0.600	3-17	9	1								
86.1059.0.600	3-17	10	1								
86.1060.0.600	3-17	11	2								
86.1061.0.800	3-21	1	1								
86.1062.0.600	3-21	2	1								
86.1063.0.600	3-21	3	1								
86.1064.0.600	3-21	4	1								
86.1065.0.600	3-21	5	1								
86.1066.0.600	3-21	6	1								
86.1067.0.000	3-21	7	2								
86.1068.0.000	3-21	8	2								
86.1070.0.600	3-23	13	2								
86.1073.0.600	3-23	14	1								
86.1074.0.800	3-23	15	1								
86.1075.0.800	3-23	16	1								
86.1076.0.800	3-23	17	1								
86.1077.0.800	3-23	18	1								
86.1078.0.800	3-23	19	1								
86.1079.0.800	3-23	20	2								
86.1081.0.800	3-23	21	1								
86.1082.0.800	3-23	22	1								
86.1084.0.800	3-23	23	1								
86.1085.0.800	3-23	24	1								
86.1086.0.000	3-23	25	1								
86.1087.0.400	3-21	9	1								