

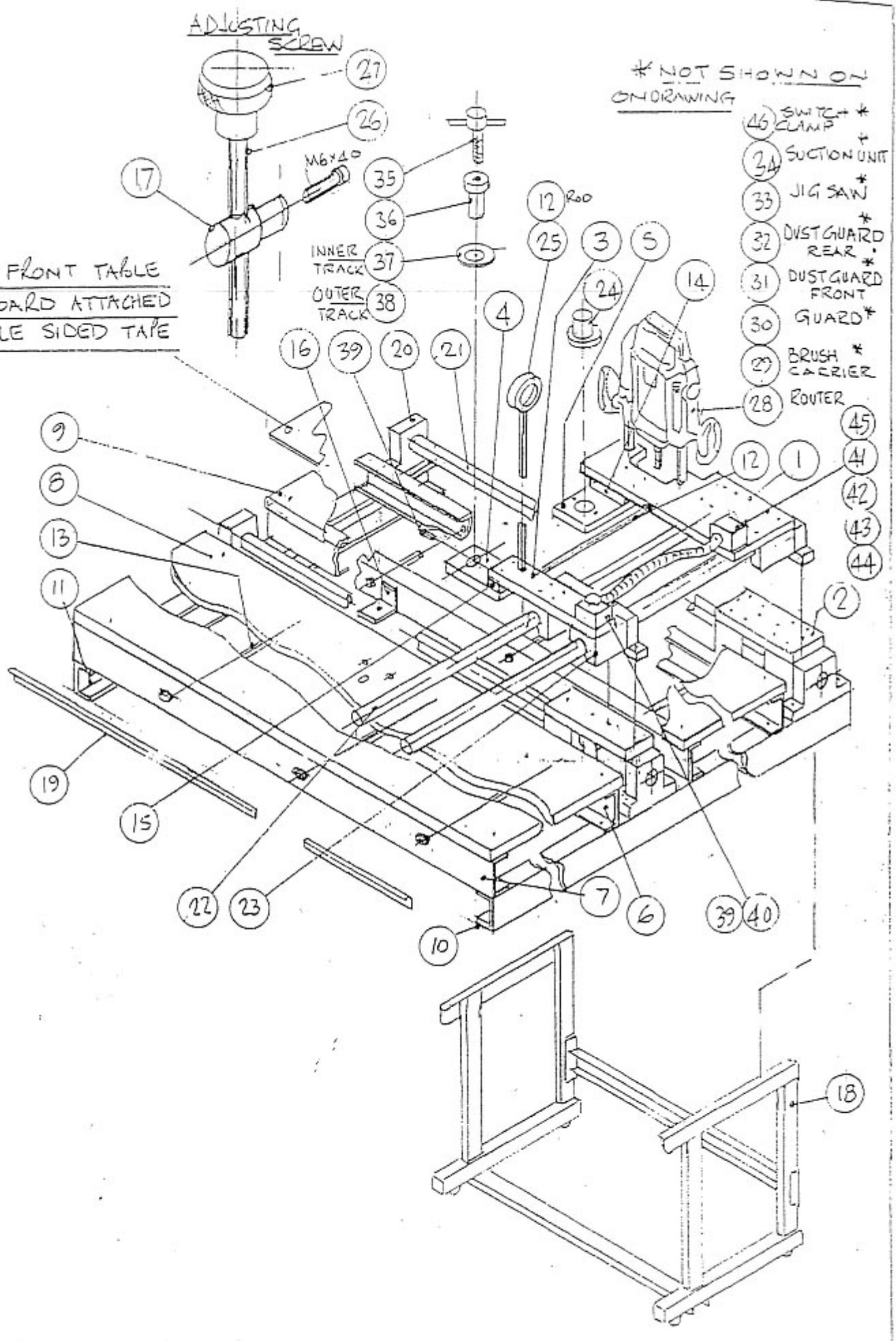
7.0 Autotrak

ITEM	CODE No.	DESCRIPTION	QTY
1	018045	Router Plate	1
2	018046	Bearing Plate 'X' Axis	2
3	018047	Bearing Plate 'Y' Axis	2
4	018048	Stylus Plate	1
5	018049	Extractor Mounting Plate	1
6	018050	Cross Beam (Front)	2
7	018051	Cross Beam (Rear)	2
8	018052	Table (Rear)	1
9	018053	Table (Front)	1
10	018054	End Mounting Beam R.H	1
11	018055	End Mounting Beam L.H	1
12	018056	Pusher / Pillar	2
13	018057	Tie Rod	6
14	018041	Spacer	1
15	018059	Spacing Block	1
16	018060	Support	4
17	018043	Adjusting Nut	2
18	047154	Stand	1
19	018031	Aluminium Extrusion	1
20	018062	Shaft Support SK25	8
21	018063	Bearing Shaft 25x1270	2
22	018064	Bearing Shaft 25x1000	2
23	018065	Bearing SBR 25UU8	
24	018012	Dust Tube Connector	1
25	018019	Support Ring	1
26	018061	Adjust Screw	1
27	018042	Hand Knob	1
28	018044	Router	1
29	018017	Brush carrier	1
30	018023	Cutter Guard	1
31	018018	Dust Guard	1
32	018022	Dust Guard (Rear)	1
33	016310	Jig Saw	1
34	016810	Suction Unit	1
35	018007	Stylus Retaining Screw	1
36	018006	Guide Bush	1
37	018008	Stylus Inner Track	1
38	018009	Stylus Outer Track	1
39	018040	Start Button	1
40	018066	Enclosure	1
41	058606	Conduit	0.5M
42	058614	Conduit Gland	2
43	046805	Cable Gland	2
44	058624	Enclosure (Junction Box)	1
45	018067	Terminal Block	1
46	018068	Bosch Switch Clamp	1

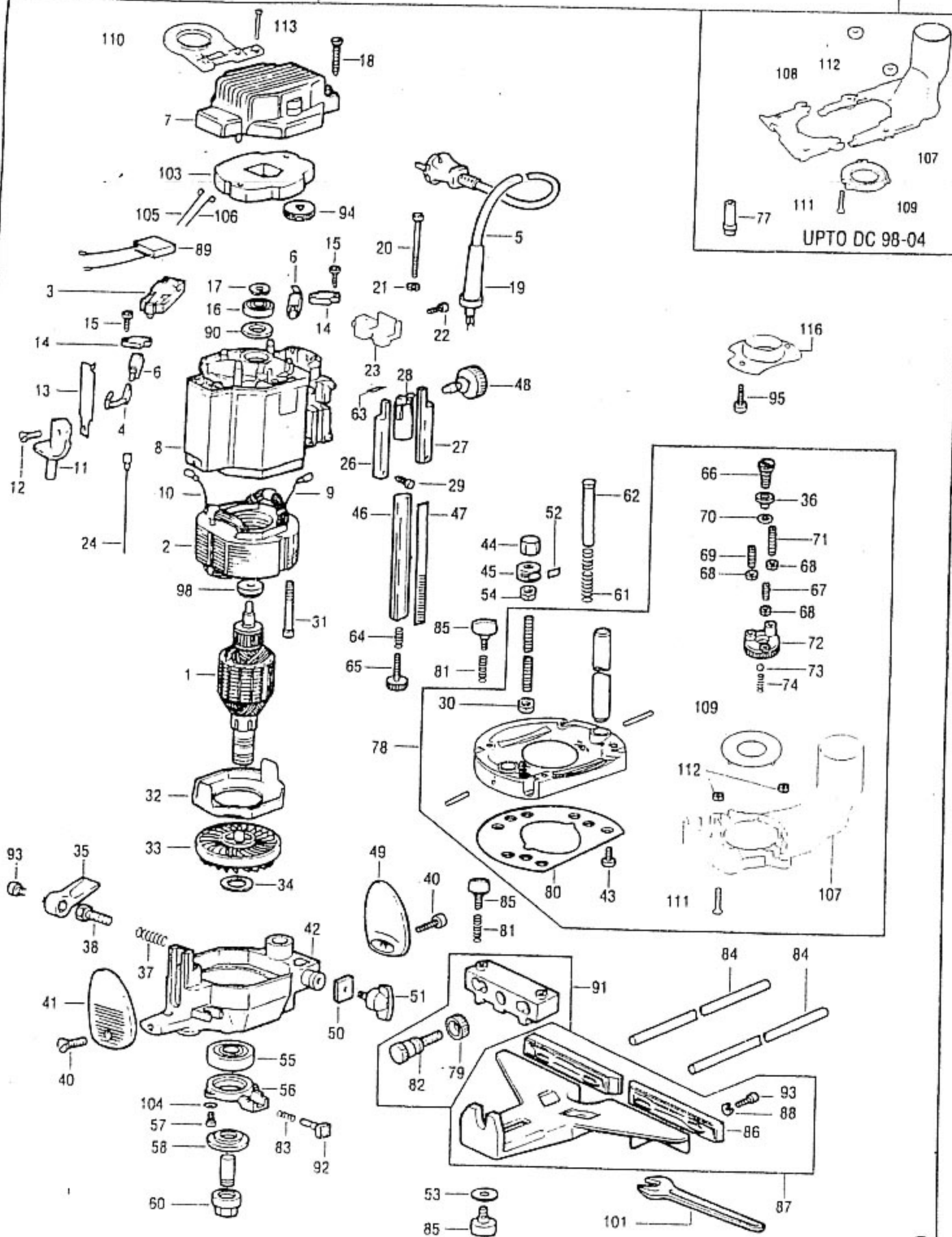
ADJUSTING SCREW

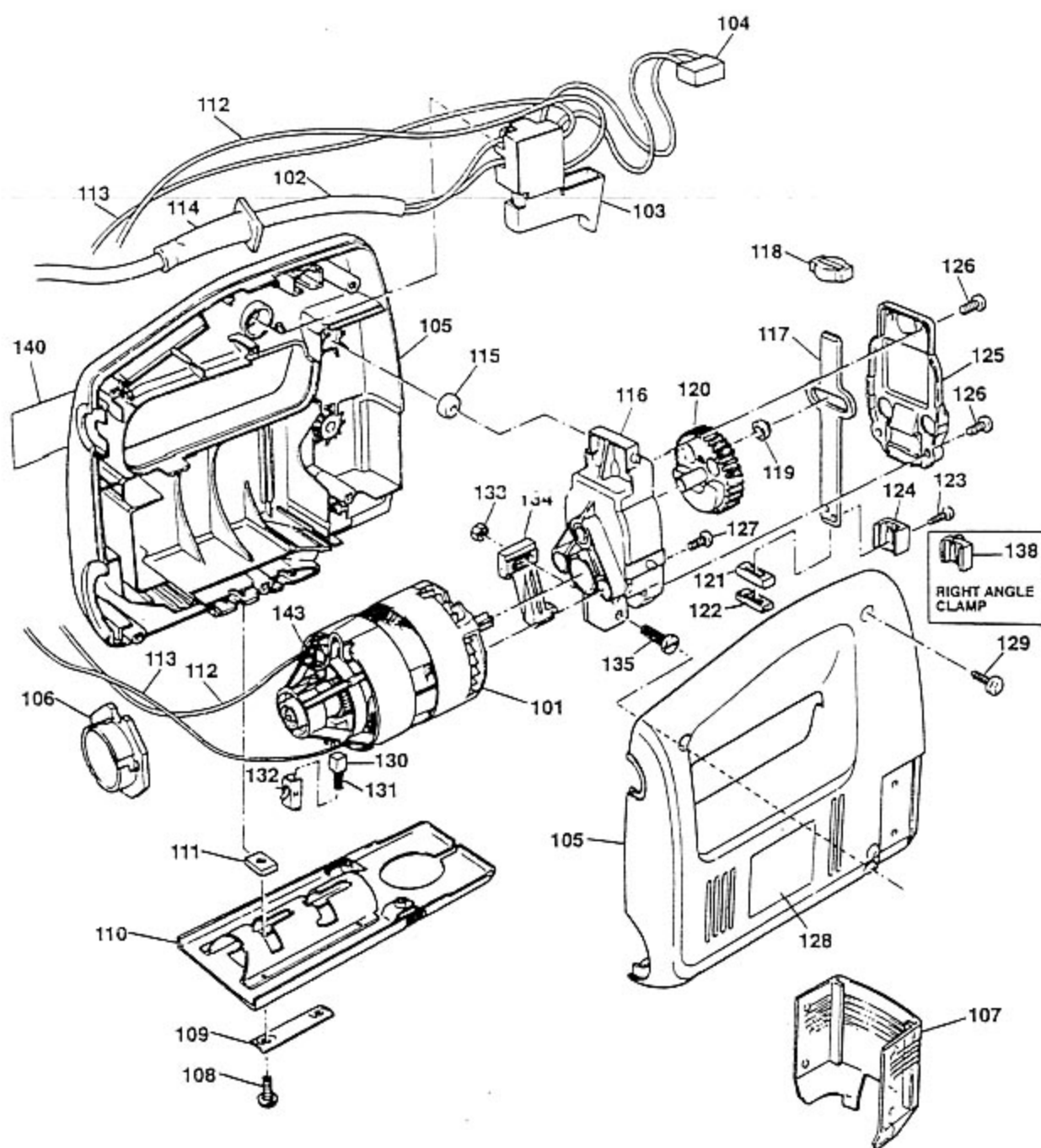
\* NOT SHOWN ON DRAWING

PROTECT FRONT TABLE  
USING BOARD ATTACHED  
BY DOUBLE SIDED TAPE



- 46 SWITCH CLAMP \*
- 34 SUCTION UNIT \*
- 33 JIG SAW \*
- 32 DUST GUARD REAR \*
- 31 DUST GUARD FRONT \*
- 30 GUARD \*
- 29 BRUSH CARRIER \*
- 28 ROUTER \*









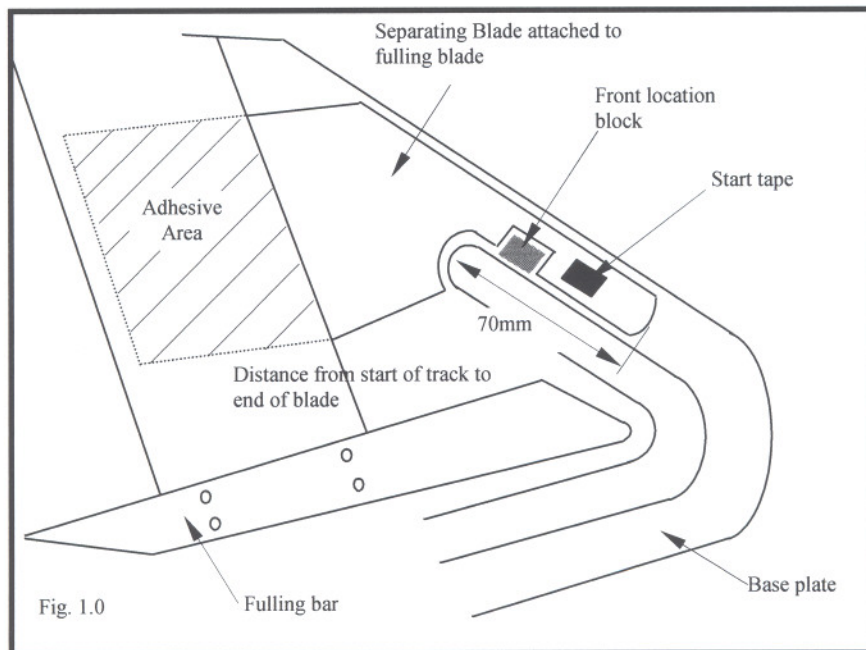
Step-Back Trimming  
Separator Blade Manufacture.

Figure 1.0 below shows the size and position of the separator blade used on the step back trimming templates. This blade is used to separate the layers of material to allow the step back wire to slide between the layers without catching on the material.

The diagram below shows the position of the blade on a Front template. The same dimension applies for a collar jig if the size of the collar allows. The 70mm dimension may have to be revised to suit particular applications.

When a template is made without a fulling bar the separator blade can be hinged from the rear of the template.

Materials Used: Tin  
Double Sided Tape



SPARE PARTS ORDERING  
PROCEDURE

This Service Manual is issued for the A.M.F  
Reece Autotrak Machine, 84-78 June 99  
SERIAL No. 001 onwards.

Customer should furnish the catalogue part  
number, the serial number of the machine,  
and information as requested in notes on  
pages illustrating the parts.

Individual parts are furnished without  
screws, nuts, taper pins, cotter pins,  
dowels, keys, spring posts, clamp studs,  
washers etc., as these can be transferred in  
most cases from the part being replaced.  
every part has its own number and can be  
ordered separately.

Parts should not be returned without  
previous approval. All return shipments  
should be sent carriage paid to:

AMF Reece  
DIVISION OF AMF REECE, INC.  
CLAYTON WOOD CLOSE,  
WEST PARK RING ROAD,  
LEEDS,  
LS16 6QQ  
ENGLAND

A Rough Guide To Jig Materials  
And Their Uses

Tufnol Sheet 1.2Mx1.2M	Used to make base plates
Aluminium Sheet 1.2Mx0.6M	Used to make top plates
Tin Plate 1.2Mx0.6M	Used to make fulling plates on fronts and collars
Aluminium Strip 1.25Mx0.25M	Used on all types of jigs for varying applications
Brass Hinge 1.8M	Used on Pocket flaps for hinging top plate
Steel Hinge 1.8M	Used on collars and fronts to hinge top plates
Green Baize 11M	Used to stop the fabric from sliding around on the Tufnol base plates
M4x10 Csk Screw	Used to hold various parts of the jigs together
Long Rivets	Used to hold various parts of the jigs together
Setting Blocks, (thin)	Used to ensure the correct gap for the track on the jigs
3/16" Tufnol Strip 1.2M	Used to cut up and stick on the side of front jigs to act as location blocks
Double Sided Tape	Used to stick the aluminium and tufnol together when manufacturing the jigs on the Autotrak
Emery Tape	Used to stop the fabric from sliding around on the Aluminium top plates
LS3 Stud	Used as location studs for the material on collar jigs.