

# JUKI

**SIMPLY**  
smart solution

## DDL-8000A Series

Direct-drive, High-speed, 1-needle, Lockstitch Machine with Automatic Thread Trimmer

**SIMPLY**  
smart solution

Good Value Models with JUKI Quality  
and Friendly to Operators



DDL-8000A-MS

Direct-drive, High-speed, 1-needle, Lockstitch Machine with Automatic Thread Trimmer

# DDL-8000A Series

### OPTION

- The cooling fan kit is for high-temperature areas.
- Cooling fan kit (with AK): **40230011**      • Cooling fan kit (without AK): **40230006**
- Long pitch kit (3 row type feed-dog): **40218621** (Feed dog, Pitch dial)
- Long pitch kit (4 row type feed-dog): **40218620** (Feed dog, Throat plate, Pitch dial)



Cooling fan kit

### SPECIFICATIONS

Model name	DDL-8000AS-MS	DDL-8000AS-SH	DDL-8000AS-SJ	DDL-8000AB-MS	DDL-8000AB-SH	DDL-8000AB-SJ
Specification	Standard type			Shorter-thread remaining type		
Application	Medium-weight	Heavy-weight	Jeans・Heavy-weight	Medium-weight	Heavy-weight	Jeans・Heavy-weight
Lubrication	Semi-dry	Minute-quantity lubrication		Semi-dry	Minute-quantity lubrication	
Max. sewing speed	5,000sti/min <sup>*1</sup>	4,500sti/min <sup>*1</sup>		5,000sti/min <sup>*1</sup>	4,500sti/min <sup>*1</sup>	
Max. stitch length	5mm		5mm (7mm)* <sup>2</sup>	5mm		5mm (7mm)* <sup>2</sup>
Lift of the presser foot	By hand: 5.5mm, Auto: 1st stage 8.5mm, 2nd stage 13mm, By knee: 15mm					
Voice guidance	with voice guide					
Lubricating oil	JUKI Machine Oil 7 (equivalent to ISO VG7)					
Needle	DB×1 (#11) #9~18 (134Nm65~110)	DB×1 (#21) #20~23 (134Nm125~160)	DP×5 (#21) #20~23 (134Nm125~160)	DB×1 (#11) #9~18 (134Nm65~110)	DB×1 (#21) #20~23 (134Nm125~160)	DP×5 (#21) #20~23 (134Nm125~160)
Power consumption	330VA					

\*1 sti/min is the abbreviation for "stitches per minute"

\*2 When the optional long pitch kit is installed: 7mm (normal feed), 5mm (reverse feed)

### WHEN YOU PLACE ORDERS

Please note when placing orders, that the model name should be written as follows:

#### Machine head & Control box

Machine head	Code
Standard type	<b>S</b>
Shorter-thread remaining type	<b>B</b>

Lubrication	Application	Code
Semi-dry head type	Medium-weight	<b>MS</b>
Minute-quantity lubrication type	Heavy-weight	<b>SH</b>
	Jeans · Heavy-weight	<b>SJ</b>

**DDL8000A** [ ] [ ] [ ] [ ] [ ] [ ] [ ]

Nipper and one-touch type reverse feed	Code
Not Provided	<b>OB</b>
Provided	<b>NB</b>

Automatic foot lifter	Code
Provided	<b>AK</b>
Not Provided	

Power supply	Code
3 phase 200~240V	<b>E</b>
Single-phase 200~240V	<b>K</b>
Single-phase 200~240V (CE)	<b>N</b>

### Simple Series Line Up



LK-1900S: Bartacking Machine

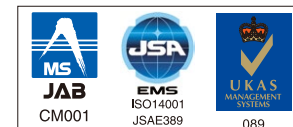


LK-1903S: Button Sewing Machine



LBH-1790S: Buttonholing Machine

JUKI ECO PRODUCTS	The DDL-8000A is an eco-friendly product which complies with JUKI ECO PRODUCTS standards for protecting the environment.
	<ul style="list-style-type: none"> <li>• The sewing machine complies with the "Juki Group Green Procurement Guidelines" on the use of hazardous substances, which is stricter than other restrictions, such as those of the RoHS Directive.</li> </ul> <p>For details of JUKI ECO PRODUCTS, refer to: <a href="https://www.juki.co.jp/en/company/eco">https://www.juki.co.jp/en/company/eco</a></p> <p><small>*The RoHS Directive is an EU Directive limiting the use of 6 hazardous substances (lead, hexavalent chromium, mercury, cadmium, PBB and PBDE) in electrical and electronic equipment. The Juki Green Procurement Guideline is the voluntarily established criteria to eliminate not only the aforementioned six substances, but also other ones which also adversely affect the environment.</small></p>



Registered Organization : JUKI CORPORATION Head Office  
The Scope of the Registration : The activities of research, development, design, sales, distribution, and maintenance services of industrial sewing machines, household sewing machines and industrial robots, etc., including sales and maintenance services of data entry systems.

# JUKI

**JUKI CORPORATION**  
SEWING MACHINERY & SYSTEMS BUSINESS UNIT

2-11-1, TSURUMAKI, TAMA-SHI,  
TOKYO 206-8551, JAPAN  
PHONE: (81) 42-357-2370  
FAX: (81) 42-357-2274  
<https://www.juki.co.jp/en>

\* Specifications and appearance are subject to change without prior notice for improvement.  
\* Read the instruction manual before putting the machine into service to ensure safety.  
\* This catalogue prints with environment-friendly soyink on recycle paper.  
\* Paper from responsible sources **FSC™ C001712**

Dunlap Sunbrand International, Inc.  
208 Bradshaw Pike Ext.  
P.O. Box 751  
Hopkinsville, KY 42241-0751  
+1 (270) 886 - 1390 / (800) 626 - 9200  
[WWW.DSInternational.Com](http://WWW.DSInternational.Com)  
[Info@DSInternational.Com](mailto:Info@DSInternational.Com)



# DDL-8000A Series

**Direct-drive, High-speed, 1-needle, Lockstitch Machine with Automatic Thread Trimmer**

The DDL-8000A Series maintains JUKI's established seam quality and is provided with narrowed-down essential and simplified functions. It helps improve the work efficiency through operator assistance with its audio guidance.



## The DDL-8000A Series of sewing machines use two different lubricating methods.

Lubrication in the frame is the main cause of oil stains on the products. The DDL-8000A Series [M] type has incorporated the semi-dry head with the frame which does not need lubrication. In addition, the DDL-8000A Series [S] type has adopted the minute-quantity lubrication system. Both come in two type; the standard type and the shorter-thread remaining type. The DDL-8000A Series of sewing machines are friendly to environments.

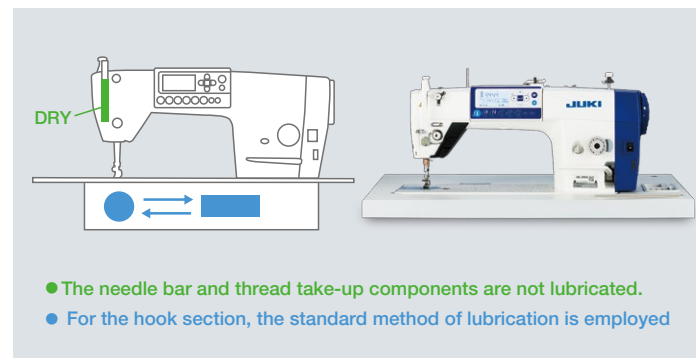
### **M** Semi-dry head type

## DDL-8000A-MS

Max. sewing speed: 5,000sti/min

**Sewing work free from oil stains by means of our leading-edge dry-head technology.**

With the advanced dry technology of enabling operation without being lubricated, a frame which does not need lubrication has been developed. It is provided with not only a high-speed sewing capability, but also a safety feature for preventing oil stains.



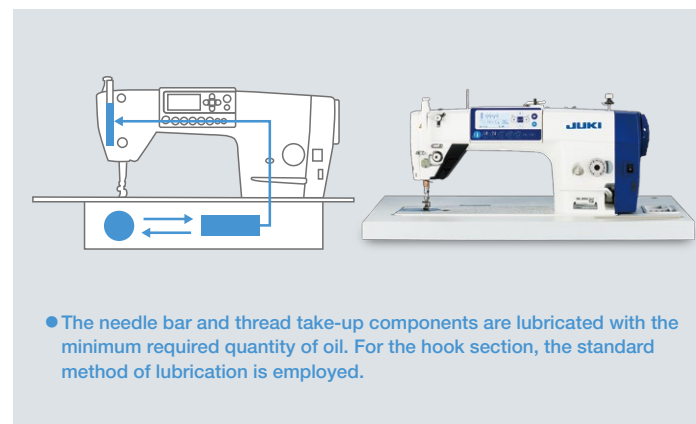
### **S** Minute-quantity lubrication type

## DDL-8000A-SH DDL-8000A-SJ

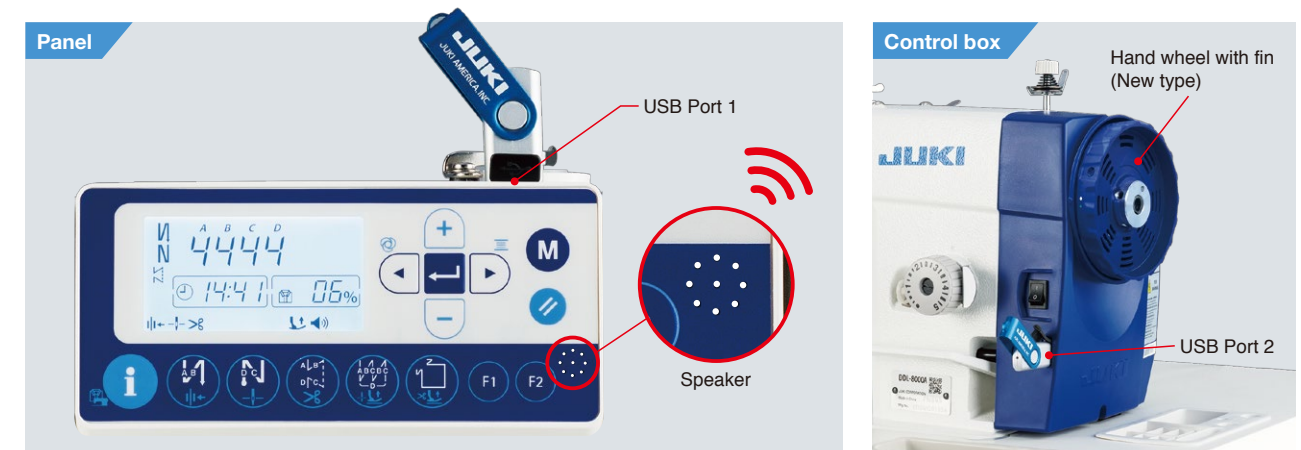
Max. sewing speed: 4,500sti/min

**The machine contributes to production improvement.**

The DDL-8000A-SH is the standard model developed with the emphasis on durability. It produces seams with consistency when run at speeds which falls in the range of the highest sewing speeds.



## Operation panel and control box are integrated with the machine head



### ● Voice guidance for assisting the operator (newly-developed LCD panel)

This sewing machine is provided as standard with the voice guidance with clock function.

Example of audio guidance messages

“Oil level is low. Please refuel.” “Oil tank is full.” “Bobbin thread will be running out.”  
“Increasing speed” “Thank you for your hard work. Good bye”

### ● Production support function

The target number of products, work progress (current number of products produced, achievement rate) and the operating rate of the sewing machine are displayed on the control panel provided that the initial data have been properly set. These pieces of data that provide an indication for the operator will contribute to enhanced production support.

- Since the USB port is provided as standard for the operation panel and control box, sewing data can be managed and the relevant software can be upgraded with ease.

## Energy-saving effect

### ● Automatic turning OFF function of the operation panel backlight

The backlight of the operation panel is automatically turned OFF when the operation panel is not operated for a certain period of time. (Setting time: 1 - 20 minutes)

### ● LED hand light

Illuminance of the LED hand light is adjustable in five levels. It can be adjusted to the illuminance to help the operator to easily carry out work around the needle, thereby helping increase work efficiency.



## Shorter-thread remaining type

## DDL-8000AB

The shorter-thread remaining type model is the high-performance sewing machine provided with the thread clamp device which is used at the beginning of sewing and the shorter-thread remaining function which is used at the end of sewing. With these features, manual thread nipping work is no longer required.

Double blades drive rotary knife type thread trimmer has been adopted. Since this thread trimmer blades intersect with each other just under the needle entry, an appropriate length of needle thread is ensured without being affected by the stitch length and the length of thread remaining on the material is 3.5 mm or less with consistency.



### Option

### Extra-short thread remaining kit: 40201086

Remaining length of thread: 3.0mm

By attaching the optional extra-short thread remaining kit to the DDL-8000AB (shorter thread remaining type), the length of thread remaining on the material is reduced to 3.0 mm or less.

\* When this kit is used, the specific throat plate (No.40163071) and feed dog (No.40164902) must be separately arranged.