

Technical Specifications S-4000						
		BH	TKF	LS	CAED	LT
		Buttonhole Machine	Tacker Machine	Label Sewer Machine	Cut After Edger Machine	Lingerie Tacker Machine
Sewing Head		AMF Reece S-4000				
Motor		DC Drive				
Sewing Speed		1,500-3,800 spm				
Stitch Type		Single Thread Chainstitch				
Stitch Density		3-14 s/cm (8-35 spi)				
Stitch Bite		1.7 mm-2.3 mm (¹ / ₁₅ "- ³ / ₃₂ "	1.7 mm-3 mm (¹ / ₁₅ "- ³ / ₂₅ "	1.7 mm-3 mm (¹ / ₁₅ "- ³ / ₂₅ "	1.7 mm-3 mm (¹ / ₁₅ "- ³ / ₂₅ "	1.7 mm-2.3 mm (¹ / ₁₅ "- ³ / ₃₂ "
Buttonhole Sizes		6.3 mm-35 mm (¹ / ₄ "-1 ¹ / ₈ "	N/A	N/A	N/A	7 mm-10 mm
Lenght of Tack	Single Row	N/A	6.4 mm-40 mm (¹ / ₄ "-1 ¹ / ₁₆ "	6.4 mm-40 mm (¹ / ₄ "-1 ¹ / ₁₆ "	N/A	N/A
	Double Row	N/A	9 mm-43 mm (¹¹ / ₃₂ "-1 ¹¹ / ₁₆ "	9 mm-43 mm (¹¹ / ₃₂ "-1 ¹¹ / ₁₆ "	9 mm-40 mm (¹¹ / ₃₂ "-1 ⁹ / ₁₆ "	N/A
Cutting		Pneumatic	N/A	N/A	Pneumatic	Pneumatic
Thread Trimming		Pneumatic				
Clamping		Pneumatic				
Clamp Height		12.7 mm (¹ / ₂ "	12.7 mm (¹ / ₂ "	12.7 mm (¹ / ₂ "	8 mm (⁵ / ₁₆ "	12.7 mm (¹ / ₂ "
Maximum Garment Thickness		3 mm (³ / ₃₂ "	4 mm (⁵ / ₃₂ "	4 mm (⁵ / ₃₂ "	4 mm (⁵ / ₃₂ "	3 mm (³ / ₂₅ "
Recommended Needle		AMF Reece Series 750 Size 90/14, 80/12, 70/10				
Recommended Thread		Core Spun Polyester No. 80, 100, 120 Tex Size 40, 50, 60				
Lubrication		Semi - Automatic				
Table Types		Parallel, Crosswise or Universal	Parallel, Crosswise or Embedded	Parallel or Crosswise	Crosswise	Crosswise - Angle Adjustable Table
Control System		P.L.C.				
Electrical Requirements		230V 50/60Hz 1Phase (according to EN 60204-1)				
Air Requirements		5.5 bar (80 psi) 14 l/min (0.25 cmf)				
Table Dimensions Parallel/Crosswise/Universal Embedded		1100 mm(L) x 600 mm(W) x 710 mm(H) 1100 mm(L) x 650 mm(W) x 800 mm(H)				
Dimensions Packed Weight		1300 mm(L) x 770 mm(W) x 1150 mm(H) 148 kg				

Accuracy of illustration and description of equipment shown herein apply to products as manufactured at time of publication.



Distributor

World Headquarters **AMF Reece CR, s.r.o.**
Tovární 837/9c
798 11 Prostějov
Czech Republic

Phone: +420 582 309 275
Fax: +420 582 360 608
E-mail: marketing@amfreece.com

Website: www.amfreece.com



S-4000

Chainstitch Buttonhole and Special Applications Machines

The S-4000 is the most productive buttonhole machine available and the only one with an electronic stop motion. Electronically adjustable sewing speed up to 3,800 spm makes the S-4000 the fastest chainstitch buttonhole and special applications machine available. The elasticity of chainstitch provides the flexibility needed for many fabrics such as knitwear.



AMF is a trademark of AMF Group, Inc.

Features Available on All S-4000 Models

Electronic Machine Start and Stop Motion extends life and improves reliability of machine by eliminating the stop motion and clutch mechanisms.

Six Patented Mechanisms bring modern, leading-edge technology into the sewing industry.



The patterned double cams design



Main cam assembly



Looper assembly

Increased Productivity is ensured with no need for bobbin changes.

Pneumatic Clamping reacts to different thicknesses and types of fabrics.

Pneumatic Cutting reduces the number of adjustments and increases the consistency and reliability of the cut.

Pneumatic Thread Trimming gives consistent and reliable trimming at the end of each sewing cycle.

Revolutionary Design reduces number of parts up to 35% from previous S-2 model.

Semi-Automatic Lubrication and Oil Level Monitor provide additional safeguards that increase machine life and dependability.



Control panel

Microprocessor Control ensures maximized ramp-up and ramp-down speeds to achieve minimized cycle times.

Cycle Counter displays production information.

Tilt-Back Head simplifies adjustments and maintenance.

Length and Stitch Bite Adjustments are easily made without requiring the operator to tilt back the machine head.

Single Pedal Electronic Start reduces operator fatigue.

Safety is enhanced with the S-4000's fully enclosed mechanisms and Emergency Stop Mechanism.

S-4000 LT

Lingerie Tacker

The S-4000 LT Chainstitch Machine was developed for finishing operations of flatseams and flatlock seams. It is the fastest flat seam machine available offering the highest quality by using new method of cutting and simultaneous over sewing of the seam finish.

- The machine has a specialty designed crosswise angle-adjustable table for operator's comfort. (The angle is 5 degrees.)
- The excess flatlock seam is sucked in by the sensor control
- The flatseam is cut and completely sewn over
- The cut off flatlock chain is then disposed into the waste bin.

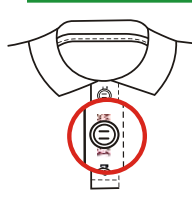
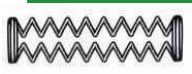
- S-4000 LT is designed for use on underwear applications

S-4000 BH

Straight Buttonhole

The S-4000 BH machine offers unsurpassed speed and quality in the production of straight buttonholes on all types of garments and material.

- Single or double cycle sew is a simple operator-controlled option
- Double sew option cycles twice for special knitwear applications
- Easy buttonhole adjustments
- Blouses, sleepwear, work garments, dresses, shirts, children's clothing, shower curtains, knitwear

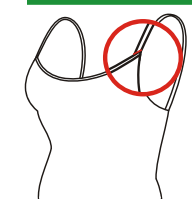


S-4000 TKF

Tacker

The S-4000 TKF is a fully electronic, single thread chainstitch machine capable of sewing both single and double row tacks.

- The submerged sewing head allows the operator to handle the garment more ergonomically with less operator fatigue
- Electronically adjustable to sew single or double row tacks
- Double row tack always starts at the front giving the operator an improved site line
- Collar stay tacking, sleeve vent tacking, shoulder strap tacking on lingerie, cuff wigans, back vent on suit coats, safety straps on hard hats, secure overlock chainstitch



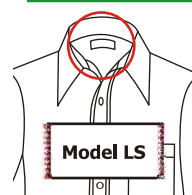
S-4000 LS

Label Sewer

The S-4000 LS is a fully automatic machine designed to attach pre-folded labels.

- Tacks labels on two sides using closed clamp foot feature
- Pneumatic clamping foot holds label and material during sewing cycle
- Closed clamp foot provides better visibility, clamping and easier loading
- Label locator helps position label for first stitch
- Electronically adjustable to sew single or double row tacks
- Double row tack is front starting

- Hanger labels on shirts and blouses, trouser waistband labels, pocket labels, towel labels



S-4000 CAED

Cut After Edger

The S-4000 CAED is an automatic, high speed edge finishing machine that is completely automated.

- Automatically clamps material, sews the exact length, trims thread, cuts off excess material and stops with clamp in position for next operation
- Fabric is trimmed close to stitching with a pneumatically operated knife
- Waste material is removed from table by air ejection system
- Sewn piece is completely finished and neat with securely locked stitching and no edges to be trimmed
- Double tack eliminates the chain left by lockstitch machines

- Men's undershirts straps, V-neck knitwear, baby wear, children's waistbands, trouser waistbands, end finishing of belts, tacking of binding tapes, joining of circular loops

