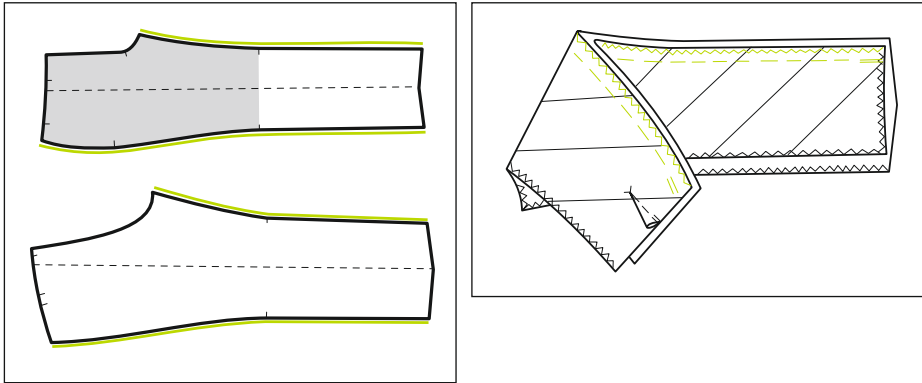
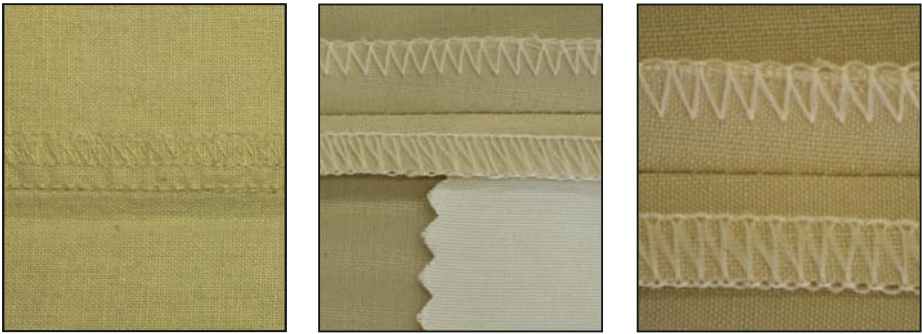


Technical Specifications

Sewing Head	Pegasus EXT 3216
Sewing Speed	max 7,000 spm
Differential Feed Ratio	0.5 - 6.0 mm
Top Feed	0-6.0 mm
Stitch Length	1.0-6.0 mm
Seam Width	10 mm (11,12 mm optional)
Needle System	B27 80-120 Nm
Memory	40

Production Data per 8 hour day	4 seams	outseams	inseams
TS-1300	650-700 trousers	900 trousers	1200 trousers
TS-2300	650 trousers	900 trousers	1500 trousers

Applications



Distributor
Dunlap Sunbrand International, Inc.
208 Bradshaw Pike
P.O. Box 751
Hopkinsville, KY 42241-0751
(800) 626-9200 / (270) 886-1390
www.dsinternational.com
info@dsinternational.com



World Headquarters **AMF Reece CR, Czech Republic**
Tovární 837/9c
798 11 Prostějov
Phone: +420 582 309 275
Fax: +420 582 360 608
E-mail: marketing@amfreece.com

Website: www.amfreece.com

TS-1300
TS-2300

Side Seamer Units

The new sewing units were designed to sew side seams and inseams on trousers and lining seams on skirts.



AMF is a trademark of AMF Group, Inc.

The new sewing units TS-1300 and TS-2300 were designed to sew side seams and inseams on trousers, and lining seams on skirts. The machine provides an option of sewing 4 or 5-thread safety stitches and double chainstitch seams. The use of photocell for start and end of sewing increases the productivity. A constant fullness distribution is reached by the differential top and bottom feeding. It is much easier to sew trouser side seams with pockets thanks to our special kit supplied as standard with foot control. Taking advantage of the programmable PLC with touch screen control, the operator can guide the hip curve at maximum sewing speed.

Standard Features

- PLC Control System
- Graphical Touch-Screen Control Panel
- Efka Mini Stop DC Servo Motor
- Pneumatic Contour (Edge) Guiding System [1]
- Automatic Sewing Start and End Photocell
- Air Nozzles on Table for Smooth Fabric Transport
- Manual Fullness Distribution by Differential Top and Bottom Feeding
- Automatic Chain Cutting Waste Removal [2]
- Thread monitor

Standard Accessories TS-2300

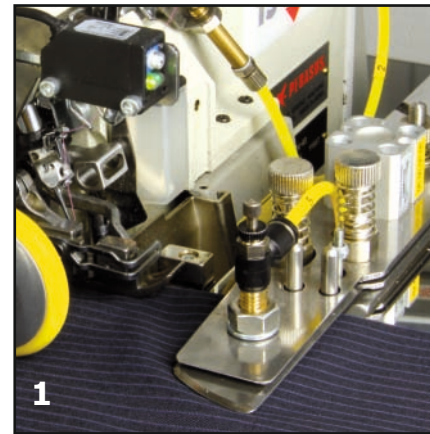
- Automatic Rail Guiding System with Photocell Controlled Mouse [3]
- Advanced Stacker [4]
- Fabric Puller [5]

Optional Accessories

- Automatic Fullness Controlled by Step Motors [6]
- Fabric Puller (TS-1300 only)
- Simple Stacker (TS-1300 only)
- Advanced Stacker (TS-1300 only)
- Fabric holder (TS-1300 only)

Sewing Procedure

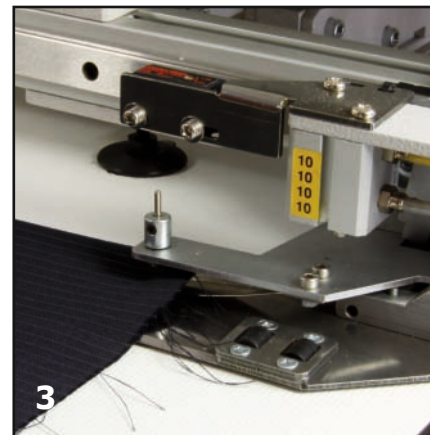
- the front and back trouser panels are aligned at each other
- the mouse clamps the work piece so it stays tightened
- the hip pocket and other difficult section are sewn manually
- the guide is activated and the machine is automatically switched to the automatic sewing
- the overlock chain is trimmed and sucked automatically to the waste bin
- the finished work piece is automatically stacked



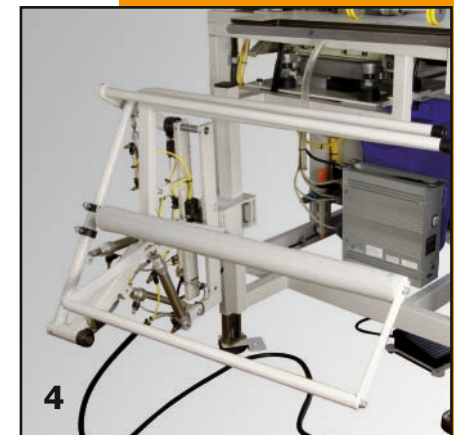
1



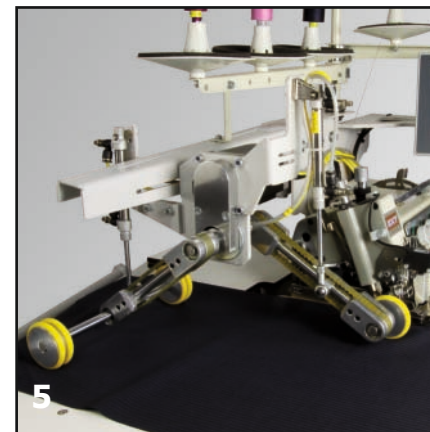
2



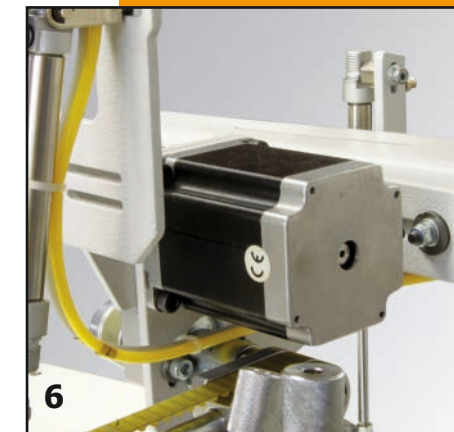
3



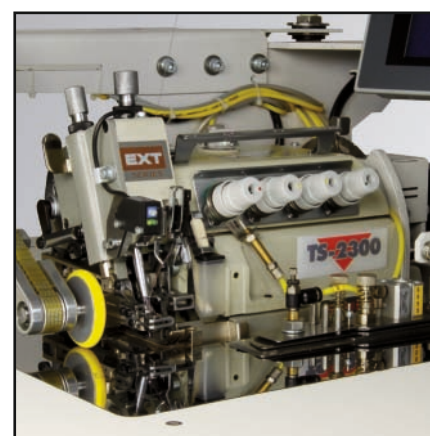
4



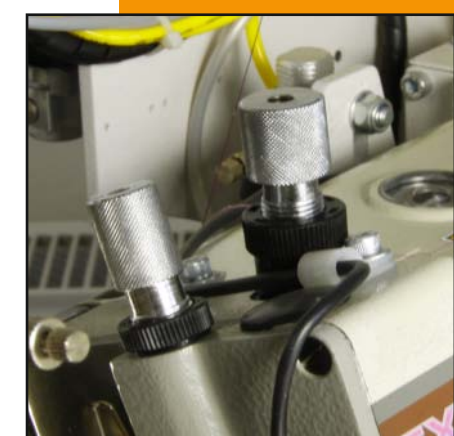
5



6



Sewing head



Clamp feet pressure adjustment